



Where Automation Connects.



inRAX[®]

MVI56-BSAPS

ControlLogix Platform

Bristol Babcock Serial Slave Module

September 22, 2008

USER MANUAL

Please Read This Notice

Successful application of this module requires a reasonable working knowledge of the Rockwell Automation ControlLogix hardware, the MVI56-BSAPS Module and the application in which the combination is to be used. For this reason, it is important that those responsible for implementation satisfy themselves that the combination will meet the needs of the application without exposing personnel or equipment to unsafe or inappropriate working conditions.

This manual is provided to assist the user. Every attempt has been made to ensure that the information provided is accurate and a true reflection of the product's installation requirements. In order to ensure a complete understanding of the operation of the product, the user should read all applicable Rockwell Automation documentation on the operation of the Rockwell Automation hardware.

Under no conditions will ProSoft Technology be responsible or liable for indirect or consequential damages resulting from the use or application of the product.

Reproduction of the contents of this manual, in whole or in part, without written permission from ProSoft Technology is prohibited.

Information in this manual is subject to change without notice and does not represent a commitment on the part of ProSoft Technology. Improvements and/or changes in this manual or the product may be made at any time. These changes will be made periodically to correct technical inaccuracies or typographical errors.

Warnings

UL Warnings

- A** Warning - Explosion Hazard - Substitution of components may impair suitability for Class I, Division 2.
- B** Warning - Explosion Hazard - When in Hazardous Locations, turn off power before replacing or rewiring modules.
Warning - Explosion Hazard - Do not disconnect equipment unless power has been switched off or the area is known to be nonhazardous.
- C** Suitable for use in Class I, division 2 Groups A, B, C and D Hazardous Locations or Non-Hazardous Locations.

ATEX Warnings and Conditions of Safe Usage:

Power, Input, and Output (I/O) wiring must be in accordance with the authority having jurisdiction

- A** Warning - Explosion Hazard - When in hazardous locations, turn off power before replacing or wiring modules.
- B** Warning - Explosion Hazard - Do not disconnect equipment unless power has been switched off or the area is known to be non-hazardous.
- C** These products are intended to be mounted in an IP54 enclosure. The devices shall provide external means to prevent the rated voltage being exceeded by transient disturbances of more than 40%. This device must be used only with ATEX certified backplanes.
- D** DO NOT OPEN WHEN ENERGIZED.

Electrical Ratings

- Backplane Current Load: 800 mA @ 5 V DC; 3mA @ 24V DC
- Operating Temperature: 0 to 60°C (32 to 140°F)
- Storage Temperature: -40 to 85°C (-40 to 185°F)
- Shock: 30g Operational; 50g non-operational; Vibration: 5 g from 10 to 150 Hz
- Relative Humidity 5% to 95% (non-condensing)
- All phase conductor sizes must be at least 1.3 mm(squared) and all earth ground conductors must be at least 4mm(squared).

Markings:



II 3 G 0C <=Ta<= 60C EEx nA IIC T4 DEMKO 07ATEX0710717X

Battery Life Advisory

All modules in the MVI series use a rechargeable Lithium Vanadium Pentoxide battery to backup the 512K SRAM memory, real-time clock, and CMOS. The battery should last for the life of the module.

The module must be powered for approximately twenty hours before it becomes fully charged. After it is fully charged, the battery provides backup power for the CMOS setup and configuration data, the real-time clock, and the 512K SRAM memory for approximately 21 days.

Before you remove a module from its power source, ensure that the battery within the module is fully charged. A fully charged battery will hold the BIOS settings (after being removed from its power source) for a limited number of days. When the battery is fully discharged, the module will revert to the default BIOS settings.

Note: The battery is not user replaceable.

ProSoft® Product Documentation

In an effort to conserve paper, ProSoft Technology no longer includes printed manuals with our product shipments. User Manuals, Datasheets, Sample Ladder Files, and Configuration Files are provided on the enclosed CD and are available at no charge from our web site: <http://www.prosoft-technology.com>

Printed documentation is available for purchase. Contact ProSoft Technology for pricing and availability.

Asia Pacific: +603.7724.2080

Europe, Middle East, Africa: +33.5.34.36.87.20

Latin America: +1.281.298.9109

North America: +1.661.716.5100

Your Feedback Please

We always want you to feel that you made the right decision to use our products. If you have suggestions, comments, compliments or complaints about the product, documentation or support, please write or call us.

ProSoft Technology

1675 Chester Avenue, Fourth Floor

Bakersfield, CA 93301

+1 (661) 716-5100

+1 (661) 716-5101 (Fax)

<http://www.prosoft-technology.com>

Copyright © ProSoft Technology, Inc. 2000 - 2008. All Rights Reserved.

MVI56-BSAPS User Manual

September 22, 2008

ProSoft Technology®, ProLinx®, inRAx®, ProTalk® and RadioLinx® are Registered Trademarks of ProSoft Technology, Inc.

Contents

| | |
|--|---------------|
| Please Read This Notice | 2 |
| Warnings | 2 |
| Battery Life Advisory | 3 |
| ProSoft® Product Documentation..... | 3 |
| Your Feedback Please..... | 3 |
| Guide to the MVI56-BSAPS User Manual | 7 |
| 1 Start Here | 9 |
| 1.1 System Requirements | 9 |
| 1.2 Package Contents | 10 |
| 1.3 Install ProSoft Configuration Builder Software | 11 |
| 1.4 Setting Jumpers | 12 |
| 1.5 Install the Module in the Rack | 13 |
| 1.6 Connect your PC to the Processor..... | 14 |
| 1.7 Open the Sample Ladder Logic | 15 |
| 1.8 Download the Sample Program to the Processor..... | 19 |
| 1.9 Connect your PC to the Module | 20 |
| 2 Module Configuration | 21 |
| 2.1 Installing and Configuring the Module | 21 |
| 2.2 ProSoft Configuration Builder | 25 |
| 2.3 [Module]..... | 29 |
| 2.4 [Backplane 56]..... | 29 |
| 2.5 [BSAPS Config] | 30 |
| 2.6 [BSAP Data Element] | 31 |
| 2.7 [BSAP Port x] | 32 |
| 2.8 Download the Project to the Module | 33 |
| 2.9 Configuring a BSAP Master | 34 |
| 3 Ladder Logic | 37 |
| 3.1 Module Data Object (BSAPModuleDef) | 37 |
| 3.2 BSAP Message Data..... | 40 |
| 4 Diagnostics and Troubleshooting | 43 |
| 4.1 Reading Status Data from the Module | 43 |
| 4.2 LED Status Indicators..... | 52 |
| 5 Reference | 55 |
| 5.1 Product Specifications..... | 55 |

| | | |
|--------------|---|-----------|
| 5.2 | Functional Overview | 57 |
| 5.3 | Cable Connections | 65 |
| 5.4 | MVI56-BSAPS Status Data Area..... | 70 |
| 6 | Support, Service & Warranty | 73 |
| 6.1 | How to Contact Us: Technical Support..... | 73 |
| 6.2 | Return Material Authorization (RMA) Policies and Conditions | 74 |
| 6.3 | LIMITED WARRANTY | 76 |
| Index | | 81 |

Guide to the MVI56-BSAPS User Manual

| Function | | Section to Read | Details |
|--|---|---|--|
| Introduction (Must Do) | → | Start Here (page 9) | This Section introduces the customer to the module. Included are: package contents, system requirements, hardware installation, and basic configuration. |
| Verify Communication, Diagnostic and Troubleshooting | → | Verifying Communication (page 52) Diagnostics and Troubleshooting (page 43) | This section describes how to verify communications with the network. Diagnostic and Troubleshooting procedures. |
| Reference Product Specifications Functional Overview Glossary | → | Reference (page 55) Functional Overview (page 57) Product Specifications (page 55) | These sections contain general references associated with this product, Specifications, and the Functional Overview. |
| Support, Service, and Warranty Index | → | Support, Service and Warranty (page 73) | This section contains Support, Service and Warranty information. Index of chapters. |

1 Start Here

In This Chapter

| | |
|---|----|
| ❖ System Requirements | 9 |
| ❖ Package Contents | 10 |
| ❖ Install ProSoft Configuration Builder Software..... | 11 |
| ❖ Setting Jumpers | 12 |
| ❖ Install the Module in the Rack | 13 |
| ❖ Connect your PC to the Processor | 14 |
| ❖ Open the Sample Ladder Logic..... | 15 |
| ❖ Download the Sample Program to the Processor..... | 19 |
| ❖ Connect your PC to the Module | 20 |

Installing the MVI56-BSAPS module requires a reasonable working knowledge of the Rockwell Automation hardware, the MVI56-BSAPS Module and the application in which they will be used.



Caution: It is important that those responsible for implementation can complete the application without exposing personnel, or equipment, to unsafe or inappropriate working conditions. Safety, quality and experience are key factors in a successful installation.

1.1 System Requirements

The MVI56-BSAPS module requires the following minimum hardware and software components:

- Rockwell Automation ControlLogix™ processor, with compatible power supply and one free slot in the rack, for the MVI56-BSAPS module. The module requires 800mA of available power.
- Rockwell Automation RSLogix 5000 programming software version 2.51 or higher.
- Rockwell Automation RSLinx communication software
- Pentium® II 450 MHz minimum. Pentium III 733 MHz (or better) recommended
- Supported operating systems:
 - Microsoft Windows XP Professional with Service Pack 1 or 2
 - Microsoft Windows 2000 Professional with Service Pack 1, 2, or 3
 - Microsoft Windows Server 2003
- 128 Mbytes of RAM minimum, 256 Mbytes of RAM recommended

- 100 Mbytes of free hard disk space (or more based on application requirements)
- 256-color VGA graphics adapter, 800 x 600 minimum resolution (True Color 1024 × 768 recommended)
- CD-ROM drive
- ProSoft Configuration Builder, HyperTerminal or other terminal emulator program.

Note: You can install the module in a local or remote rack. For remote rack installation, the module requires EtherNet/IP or ControlNet communication with the processor.

1.2 Package Contents

The following components are included with your MVI56-BSAPS module, and are all required for installation and configuration.

Important: Before beginning the installation, please verify that all of the following items are present.

| Qty. | Part Name | Part Number | Part Description |
|------|----------------------|---|--|
| 1 | MVI56-BSAPS Module | MVI56-BSAPS | Bristol Babcock Serial Slave Module |
| 1 | Cable | Cable #15, RS232 Null Modem | For RS232 Connection to the CFG Port |
| 3 | Cable | Cable #14, RJ45 to DB9 Male Adapter cable | For DB9 Connection to Module's Port |
| 2 | Adapter | 1454-9F | Two Adapters, DB9 Female to Screw Terminal. For RS422 or RS485 Connections to Port 1 and 2 of the Module |
| 1 | ProSoft Solutions CD | | Contains sample programs, utilities and documentation for the MVI56-BSAPS module. |

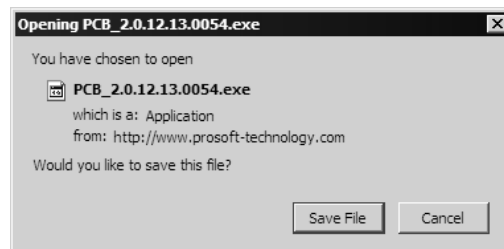
If any of these components are missing, please contact ProSoft Technology Support for replacement parts.

1.3 Install ProSoft Configuration Builder Software

You must install the ProSoft Configuration Builder (PCB) software in order to configure the MVI56-BSAPS module. You can always get the newest version of ProSoft Configuration Builder from the ProSoft Technology web site.

To install ProSoft Configuration Builder from the ProSoft Web Site

- 1 Open your web browser and navigate to <http://www.prosoft-technology.com/pcb>
- 2 Click the **Download Here** link to download the latest version of ProSoft Configuration Builder.
- 3 Choose "Save" or "Save File" when prompted. The following illustrations show the file download prompt for two of the most common web browsers.



- 4 Make a note of the location where you saved the file, for example "Desktop", or "My Documents", so you can start the installation program.
- 5 When the download is complete, locate and open the file, and then follow the instructions on your screen to install the program.

If you do not have access to the Internet, you can install ProSoft Configuration Builder from the ProSoft Solutions CD-ROM, included in the package with your MVI56-BSAPS module.

To install ProSoft Configuration Builder from the CD-ROM

- 1 Insert the ProSoft Solutions CD-ROM into the CD drive of your PC. Wait for the startup screen to appear.
- 2 On the startup screen, click *Product Documentation*. This action opens an explorer window.

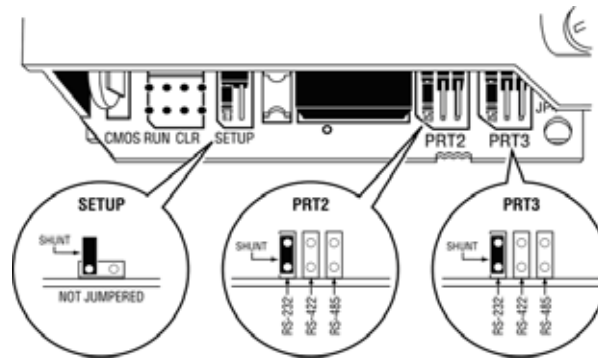
- 3 Click to open the *Utilities* folder. This folder contains all of the applications and files you will need to set up and configure your module.
- 4 Double-click the *ProSoft Configuration Builder Setup* program and follow the instructions on your screen to install the software on your PC.

Note: Many of the configuration and maintenance procedures use files and other utilities on the CD-ROM. You may wish to copy the files from the Utilities folder on the CD-ROM to a convenient location on your hard drive.

1.4 Setting Jumpers

If you use an interface other than RS-232 (default), you must change the jumper configuration to match the interface. There are three jumpers located at the bottom of the module.

The following illustration shows the MVI56-BSAPS jumper configuration:



- 1 Set the PRT 2 (for application port 1) and PRT 3 (for application port 2) jumpers for RS232, RS422 or RS485 to match the wiring needed for your application. The default jumper setting for both application ports is RS-232.
- 2 The Setup Jumper acts as "write protection" for the module's flash memory. In "write protected" mode, the Setup pins are not connected, and the module's firmware cannot be overwritten. Do not jumper the Setup pins together unless you are directed to do so by ProSoft Technical Support.

1.5 Install the Module in the Rack

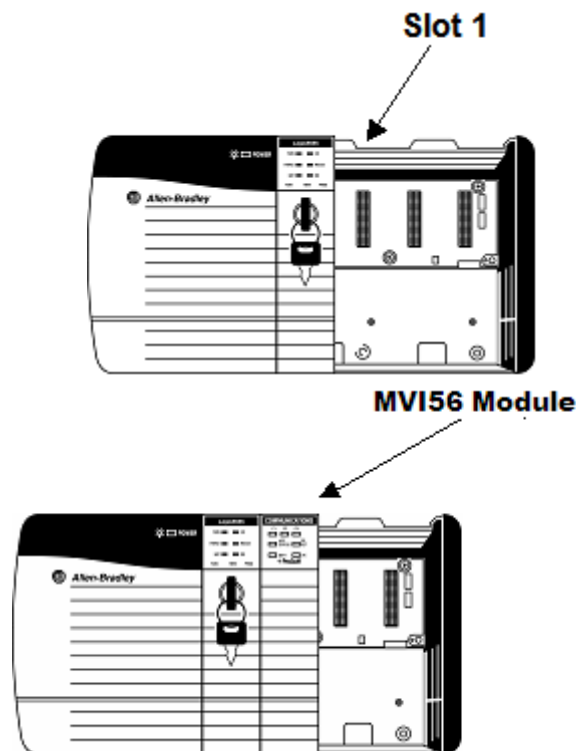
If you have not already installed and configured your ControlLogix processor and power supply, please do so before installing the MVI56-BSAPS module. Refer to your Rockwell Automation product documentation for installation instructions.

Warning: You must follow all safety instructions when installing this or any other electronic devices. Failure to follow safety procedures could result in damage to hardware or data, or even serious injury or death to personnel. Refer to the documentation for each device you plan to connect to verify that suitable safety procedures are in place before installing or servicing the device.

After you have checked the placement of the jumpers, insert MVI56-BSAPS into the ControlLogix chassis. Use the same technique recommended by Rockwell Automation to remove and install ControlLogix modules.

Warning: When you insert or remove the module while backplane power is on, an electrical arc can occur. This could cause an explosion in hazardous location installations. Verify that power is removed or the area is non-hazardous before proceeding. Repeated electrical arcing causes excessive wear to contacts on both the module and its mating connector. Worn contacts may create electrical resistance that can affect module operation.

- 1 Turn power OFF.
- 2 Align the module with the top and bottom guides, and slide it into the rack until the module is firmly against the backplane connector.



- 3 With a firm but steady push, snap the module into place.

1.7 Open the Sample Ladder Logic

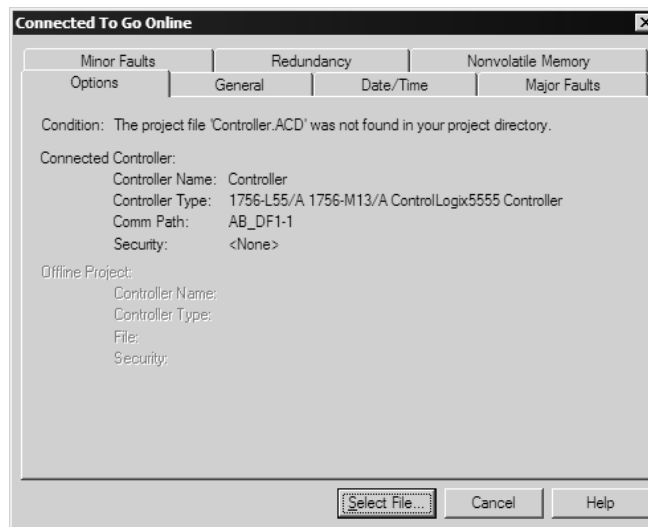
The sample program for your MVI56-BSAPS module includes custom tags, data types and ladder logic for data I/O and status monitoring. For most applications, you can run the sample ladder program without modification, or, for advanced applications, you can incorporate the sample program into your existing application.

The inRAX Solutions CD provides one or more versions of the sample ladder logic. The version number appended to the file name corresponds with the firmware version number of your ControlLogix processor. The firmware version and sample program version must match.

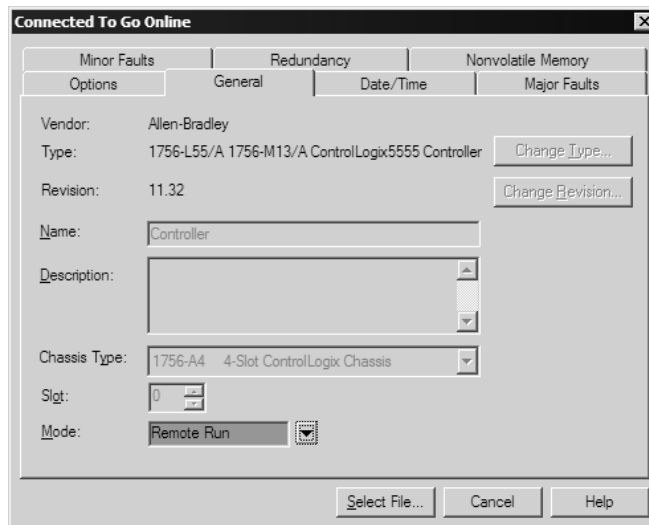
1.7.1 To Determine the Firmware Version of your Processor

Important: The RSLinx service must be installed and running on your computer in order for RSLogix to communicate with the processor. Refer to your RSLinx and RSLogix documentation for help configuring and troubleshooting these applications.

- 1 Connect an RS-232 serial cable from the COM (serial) port on your PC to the communication port on the front of the processor.
- 2 Start RSLogix 5000 and close any existing project that may be loaded.
- 3 Open the Communications menu and choose **Go Online**. RSLogix will establish communication with the processor. This may take a few moments.
- 4 When RSLogix has established communication with the processor, the Connected To Go Online dialog box will open.



- 5 On the Connected To Go Online dialog box, click the General tab. This tab shows information about the processor, including the Revision (firmware) version. In the following illustration, the firmware version is 11.32

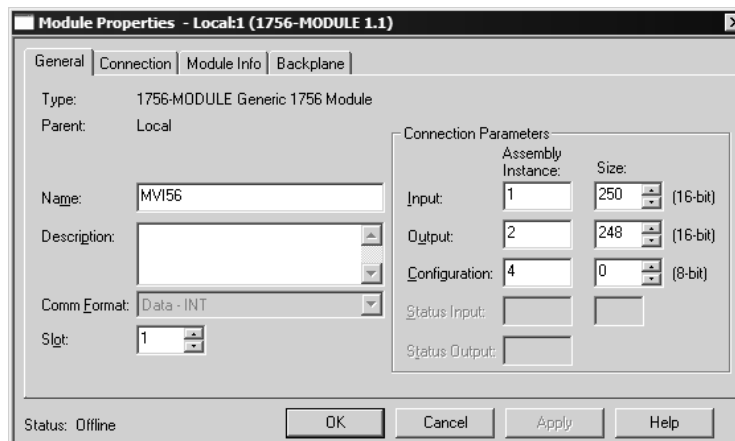


1.7.2 Select the Slot Number for the Module

The sample application is for a module installed in Slot 1 in a ControlLogix rack. The ladder logic uses the slot number to identify the module. If you are installing the module in a different slot, you must update the ladder logic so that program tags and variables are correct, and do not conflict with other modules in the rack.

To change the slot number

- 1 In the Controller Organization list, select the module [1] 1756-MODULE MVI56, and then click the right mouse button to open a shortcut menu.
- 2 On the shortcut menu, choose **Properties**. This action opens the Module Properties dialog box.



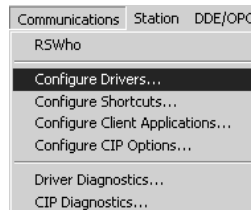
- 3 In the **Slot:** field, use the spinners on the right side of the field to select the slot number where the module will reside in the rack, and then click OK.

RSLogix will automatically apply the slot number change to all tags, variables and ladder logic rungs that use the MVI56-BSAPS slot number for computation.

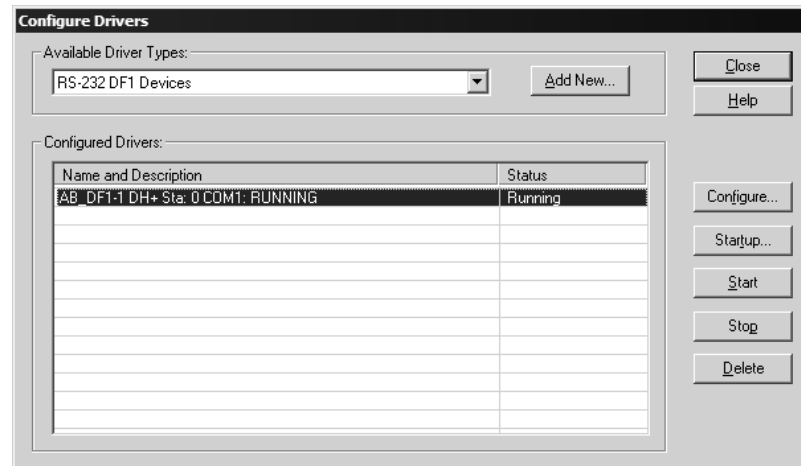
1.7.3 Configuring RSLinx

If RSLogix is unable to establish communication with the processor, follow these steps:

- 1 Open RSLinx.
- 2 Open the Communications menu, and choose Configure Drivers.



This action opens the Configure Drivers dialog box.



Note: If the list of configured drivers is blank, you must first choose and configure a driver from the Available Driver Types list. The recommended driver type to choose for serial communication with the processor is "RS-232 DF1 Devices".

- 3 Click to select the driver, and then click Configure. This action opens the Configure Allen-Bradley DF1 Communications Device dialog box.



- 4 Click the Auto-Configure button. RSLinx will attempt to configure your serial port to work with the selected driver.
- 5 When you see the message "Auto Configuration Successful", click the OK button to dismiss the dialog box.

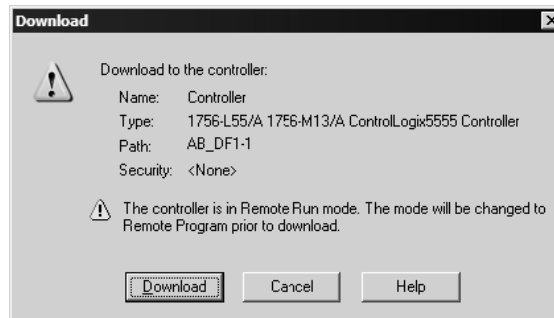
Note: If the auto-configuration procedure fails, verify that the cables are connected correctly between the processor and the serial port on your computer, and then try again. If you are still unable to auto-configure the port, refer to your RSLinx documentation for further troubleshooting steps.

1.8 Download the Sample Program to the Processor

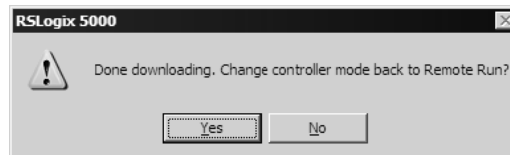
Note: The key switch on the front of the ControlLogix module must be in the REM position.

To download the sample program from RSLogix 5000 to the ControlLogix processor

- 1 If you are not already online to the processor, open the Communications menu, and then choose Download. RSLogix will establish communication with the processor.
- 2 When communication is established, RSLogix will open a confirmation dialog box. Click the Download button to transfer the sample program to the processor.



- 3 RSLogix will compile the program and transfer it to the processor. This process may take a few minutes.
- 4 When the download is complete, RSLogix will open another confirmation dialog box. Click OK to switch the processor from Program mode to Run mode.

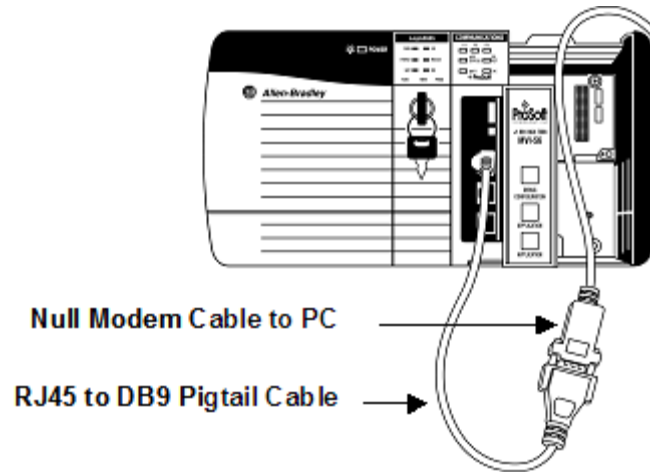


Note: If you receive an error message during these steps, refer to your RSLogix documentation to interpret and correct the error.

1.9 Connect your PC to the Module

With the module securely mounted, connect your PC to the **Configuration/Debug** port using an RJ45-DB-9 Serial Adapter Cable and a Null Modem Cable.

- 1 Attach both cables as shown.
- 2 Insert the RJ45 cable connector into the Configuration/Debug port of the module.
- 3 Attach the other end to the serial port on your PC or laptop.



2 Module Configuration

In This Chapter

| | |
|---|----|
| ❖ Installing and Configuring the Module | 21 |
| ❖ ProSoft Configuration Builder | 25 |
| ❖ [Module]..... | 29 |
| ❖ [Backplane 56]..... | 29 |
| ❖ [BSAPS Config] | 30 |
| ❖ [BSAP Data Element] | 31 |
| ❖ [BSAP Port x] | 32 |
| ❖ Download the Project to the Module..... | 33 |
| ❖ Configuring a BSAP Master..... | 34 |

This section contains the setup procedure, data, and ladder logic requirements for successful application of the MVI56-BSAPS module. Each step in the setup procedure is defined in order to simplify the use of the module.

The section also contains a discussion of the data object defined for the module. This single object completely encapsulates all the data required for module operation. It is important to understand each element of the object for proper application of the module.

The ladder logic requirement section defines the minimum ladder logic required to apply the module in a user application. The logic is simple to understand and implement.

2.1 Installing and Configuring the Module

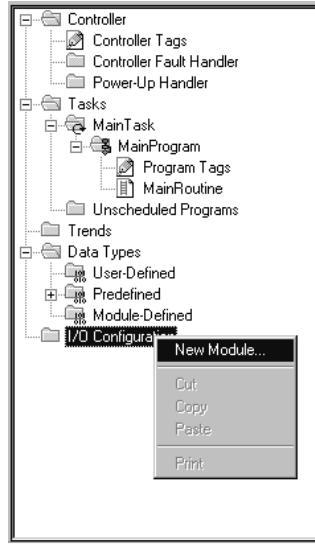
The configuration process consists of the following steps.

1 Download the sample program to the processor.

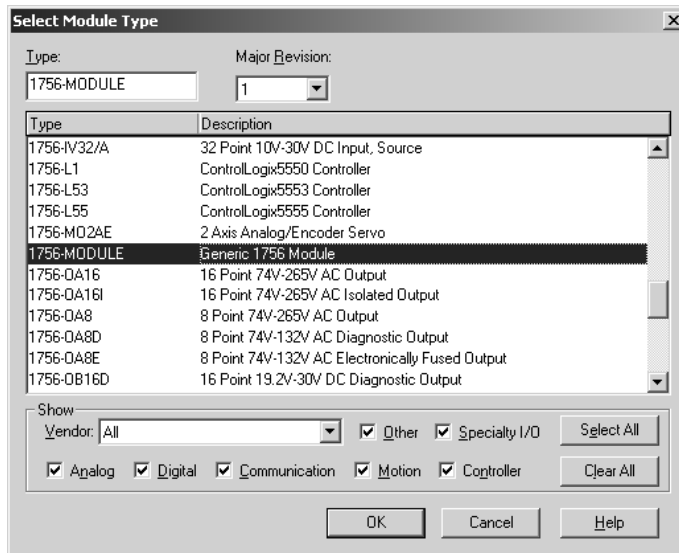
Note: For most applications, the sample program will work without modification. We strongly recommend setting up the module first with the sample program, before attempting to add the module to an existing application or create a custom application.

Modify the module's configuration files to meet the needs of your application, and copy the updated configuration to the module. Example configuration files are provided on the CD-ROM. Refer to *Modifying the Configuration File* (page 27) for more information on the configuration files.

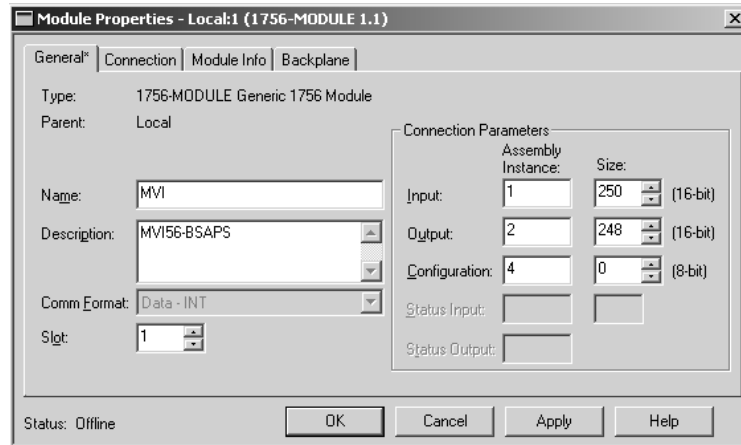
First, define the module to the system. Right-click the mouse button on the I/O Configuration option in the Controller Organization window to display a pop-up menu. Select the New Module... option from the I/O Configuration menu.



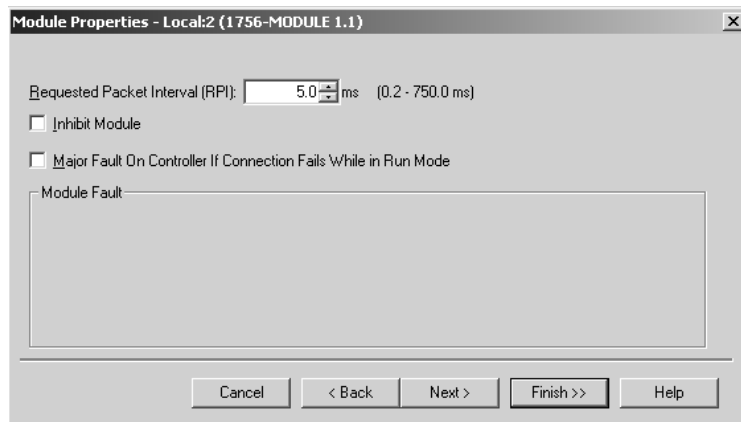
This action opens the following dialog box.



Select the 1756-Module (Generic 1756 Module) from the list and click OK. The following dialog box is displayed.

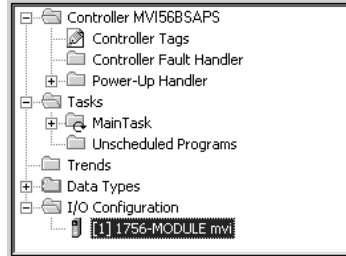


Fill in the dialog boxes as shown adjusting the Name, Description and Slot options for your application. You must select the **Comm Format** as **Data - INT** in the dialog box. Failure to set the **Assembly Instance** and **Size** values correctly will result in a module that will not communicate over the backplane of the ControlLogix rack. Click Next to display the next dialog box.

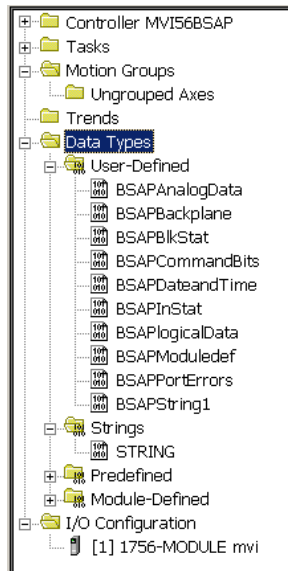


Select the Request Packet Interval value for scanning the I/O on the module. This value represents the minimum frequency the module will handle scheduled events. This value should not be set to less than 1 millisecond. Values between 1 and 10 milliseconds should work with most applications.

After completing the module setup, the Controller Organization window will display the module's presence. The data required for the module will be defined to the application, and objects will be allocated in the Controller Tags data area. The following example shows the Controller Organization window.



Next, define the User Defined Data Types to be used with the module. Copy these data types from the example ladder logic if you are not using the example. They will be defined if you are starting from the example ladder logic. The Controller Organization window should display the User Defined Data Types shown in the following example:



Next, define the data to be used to interface with the module and the ladder logic. Open the Controller Tags Edit Tags dialog box and enter the values required for the application. You can set the tag name to any valid tag name you desire. If you are using the example ladder logic, this step has already been performed.

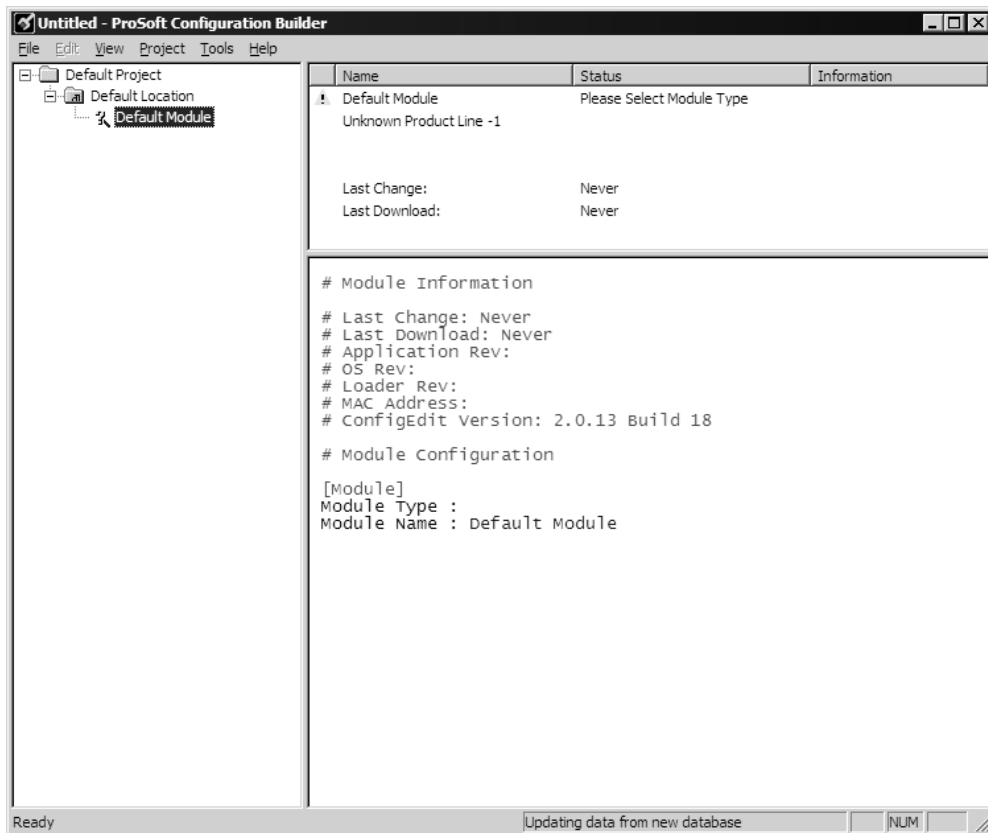
The last step in the module setup is to add the ladder logic. If you are using the example ladder logic, adjust the ladder to fit your application. If you are not using the ladder example, copy the ladder logic shown in the Controller Organization window below to your application.

2.2 ProSoft Configuration Builder

ProSoft Configuration Builder (PCB) provides a quick and easy way to manage module configuration files customized to meet your application needs. PCB is not only a powerful solution for new configuration files, but also allows you to import information from previously installed (known working) configurations to new projects.

2.2.1 Set Up the Project

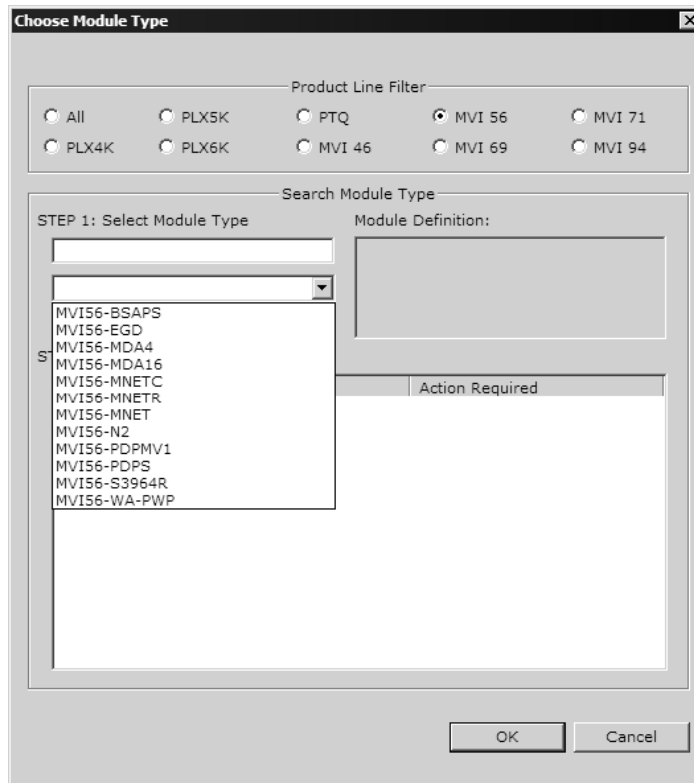
To begin, start ProSoft Configuration Builder. If you have used other Windows configuration tools before, you will find the screen layout familiar. ProSoft Configuration Builder's window consists of a tree view on the left, an information pane and a configuration pane on the right side of the window. When you first start ProSoft Configuration Builder, the tree view consists of folders for Default Project and Default Location, with a Default Module in the Default Location folder. The following illustration shows the ProSoft Configuration Builder window with a new project.



Your first task is to add the MVI56-BSAPS module to the project.

- 1 Use the mouse to select "Default Module" in the tree view, and then click the right mouse button to open a shortcut menu.

- 2 On the shortcut menu, choose "Choose Module Type". This action opens the Choose Module Type dialog box.



- 3 In the Product Line Filter area of the dialog box, select MVI56. In the Select Module Type dropdown list, select MVI56-BSAPS, and then click OK to save your settings and return to the ProSoft Configuration Builder window.

The next task is to set the module parameters.

Adding a Project

To add a project to an existing project file:

- 1 Select the Default Project icon.
- 2 Choose Project from the Project menu, then choose Add Project. A new project folder appears.

Adding a Module

To add a module to your project:

- 1 Double-click the Default Module icon to open the Choose Module Type dialog box.
- 2 On the Choose Module Type dialog box, select the module type.

Or

- 1 Open the Project menu and choose Location.
- 2 On the Location menu, choose Add Module.

To add a module to a different location:

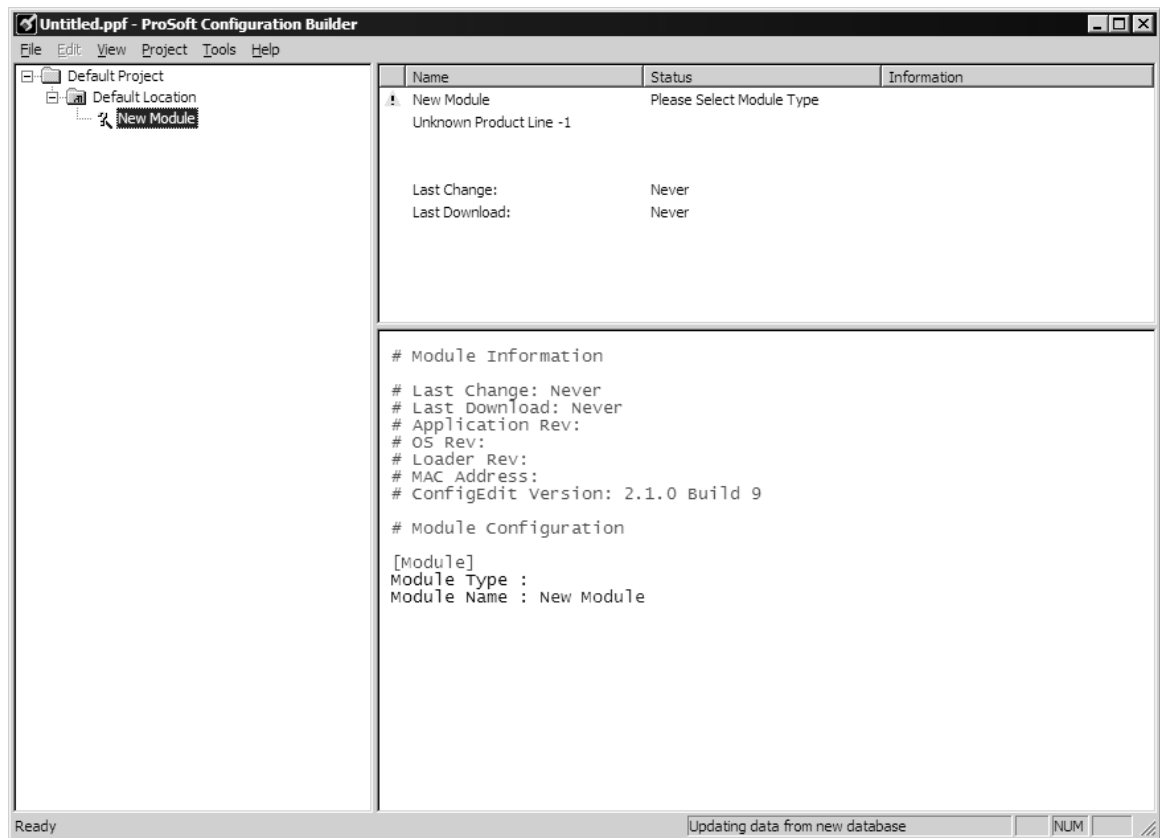
- 1 Right-click the Location folder and choose Add Module. A new module icon appears.

Or

- 1 Select the Location icon.
- 2 From the Project menu, select Location, then select Add Module.

2.2.2 Set Module Parameters

Notice that the contents of the information pane and the configuration pane changed when you added the MVI56-BSAPS module to the project.





At this time, you may wish to rename the "Default Project" and "Default Location" folders in the tree view.

To rename an object:

- 1 Select the object, and then click the right mouse button to open a shortcut menu. From the shortcut menu, choose Rename.
- 2 Type the name to assign to the object.
- 3 Click away from the object to save the new name.



Module Entries

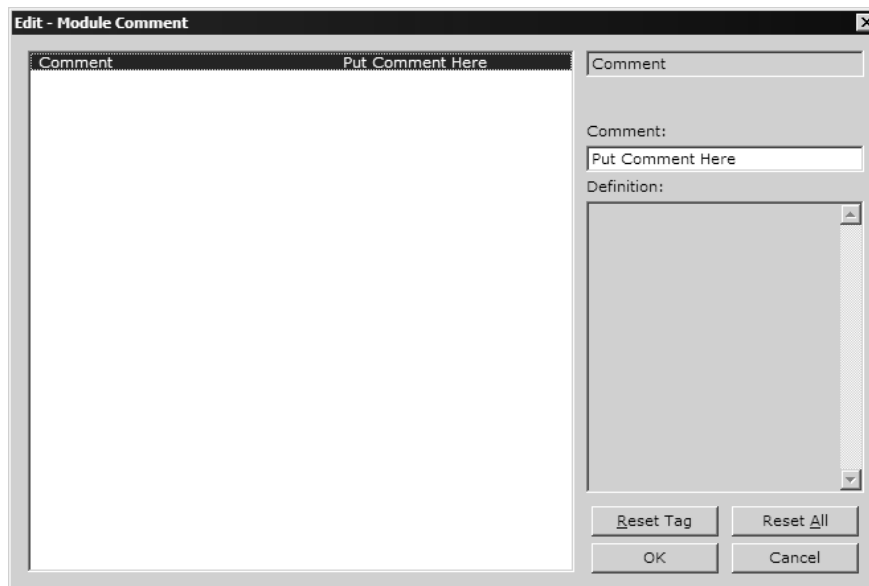
To configure module parameters

- 1 Click on the plus sign next to the icon  Comment to expand module information.
- 2 Double-click the  Module Comment icon to open the Edit dialog box.
- 3 To edit a parameter, select the parameter in the left pane and make your changes in the right pane.
- 4 Click OK to save your changes.

Comment Entries

To add comments to your configuration file:

- 1 Click the plus sign to the left of the  Comment icon to expand the Module Comments.
- 2 Double-click the  Module Comment icon. The Edit - Module Comment dialog appears.



- 3 Enter your comment and click OK to save your changes.

Printing a Configuration File

To print a configuration file:

- 1 Select the Module icon, and then click the right mouse button to open a shortcut menu.
- 2 On the shortcut menu, choose View Configuration. This action opens the View Configuration window.
- 3 On the View Configuration window, open the File menu, and choose Print. This action opens the Print dialog box.
- 4 On the Print dialog box, choose the printer to use from the dropdown list, select printing options, and then click OK.

2.3 [Module]

This section is used to define the configuration for the Module level data.

2.3.1 *Module Type*

The part number for the module, for example MVI56-BSAPS

2.3.2 *Module Name*

0 to 80 characters

This parameter assigns a name to the module that can be viewed using the configuration/debug port. Use this parameter to identify the module and the configuration file.

2.4 [Backplane 56]

2.4.1 *Read Register Start*

Range 0 to 3999

This parameter specifies the starting register in the module where data will be transferred from the module to the processor. Valid range for this parameter is 0 to 3999.

2.4.2 *Read Register Count*

0 to 4000

The Read Register Count parameter defines the size of the module's input database, up to a maximum value of 4000 words.

2.4.3 *Write Register Start*

0 to 3999

This parameter specifies the starting register in the module where the data will be transferred from the processor to the module.

2.4.4 *Read Register Count*

0 to 4000

The Read Register Count parameter defines the size of the module's input database, up to a maximum value of 4000 words.

2.4.5 *Backplane Fail Count*

0 to 65535

This parameter specifies the number of consecutive backplane transfer failures that can occur before communications should be halted.

2.4.6 Error/Status Block Pointer

1 to 7000

The Error/Status Block Pointer parameter is used to specify the range of database registers to use for error and status data. The value should be no lower than 700, to avoid overwriting data, and no higher than 6970, to allow sufficient space for the error/status block.

2.5 [BSAPS Config]

This section is used to define the BSAPS configuration for the BSAPS device simulated on network port

2.5.1 Number of Signal Value

0 to 255

2.5.2 Signal List Number

1 to 300

List Number is the MAX number of a range from 1 to MAX. Only one list can be setup.

2.5.3 Array Element Row

Data Array Element Row ((Row * Column) <= Number of Signal Value)

2.5.4 Array Element Column

Data Array Element Column ((Row * Column) ≤ Number of Signal Value)

2.5.5 SFirmware Enable

0 = Disable, 1 = Enable.

This parameter enables the slave for longer messages on specific BSAP Master devices.

2.5.6 Immediate Response Mode

0 = Disable, 1 = Enable.

This parameter enables slave immediate response.

2.6 [BSAP Data Element]

This section defines the database structure for the BSAP Data Element.

2.6.1 *Signal Type*

0=Analog, 1=Logical, 2=String, 4=Analog w Alarm, 5=Logical w Alarm

2.6.2 *Version No*

Version number is the version of each element that can be read by a master.

2.6.3 *Signal Addr*

The Signal Address indicates the local address of each element that can be used to read or write the signal by the local address.

2.6.4 *Hi DB*

High Deadband (Also use for logical signal to indicate change of alarm state: 0 or 1)

2.6.5 *Lo DB*

Low Deadband

2.6.6 *Hi AL*

High Alarm Limit

2.6.7 *Lo AL*

Low Alarm Limit

2.6.8 *HH AL*

High-High Alarm Limit

2.6.9 *LL AL*

Low-Low Alarm Limit

2.6.10 *Base Name*

Max char of Base Name = 8

2.6.11 *Extension Name*

Max char of Extension Name = 6

2.6.12 Attribute Name

Max char of Attribute Name = 4

2.6.13 Signal Descriptor

Max char of Signal Descriptor = 64

2.7 [BSAP Port x]

This section is used to define the port configuration for the BSAPS device simulated on network port.

2.7.1 Enable

Enable: Yes #No=Port Disabled, Yes=Port Enabled

This parameter defines if the port will be used. If the parameter is set to No, the port is disabled. A value of Yes enables the port.

2.7.2 Baud Rate

Baudrate: 1200 #Baudrate for port (110 to 115.2K)

This is the baud rate to be used for the port. Enter the baud rate as a value. Baud rate entries are 110, 150, 300, 600, 1200, 2400, 4800, 9600, 19200, 28800, 57600, 115200.

2.7.3 Parity

None, Odd, Even, Mark, Space

Parity is a simple error checking algorithm used in serial communication. This parameter specifies the type of parity checking to use.

All devices communicating through this port must use the same parity setting.

2.7.4 Data Bits

5, 6, 7 or 8

This parameter sets the number of data bits for each word used by the protocol.

2.7.5 Stop Bits

1 or 2

Stop bits signal the end of a character in the data stream. For most applications, use one stop bit. For slower devices that require more time to resynchronize, use two stop bits.

All devices communicating through this port must use the same number of stop bits.

2.7.6 RTS On

0 to 65535 milliseconds

This parameter sets the number of milliseconds to delay after RTS is asserted before the data will be transmitted.

2.7.7 RTS Off

0 to 65535 milliseconds

This parameter sets the number of milliseconds to delay after the last byte of data is sent before the RTS modem signal will be set low.

2.7.8 Use CTS Line

Yes or No

This parameter specifies if the CTS modem control line is to be used. If the parameter is set to No, the CTS line will not be monitored. If the parameter is set to Yes, the CTS line will be monitored and must be high before the module will send data. Normally, this parameter is required when half-duplex modems are used for communication (2-wire).

2.7.9 Slave ID

Slave ID: 1 #1-255 Modbus Node Address (Slave)

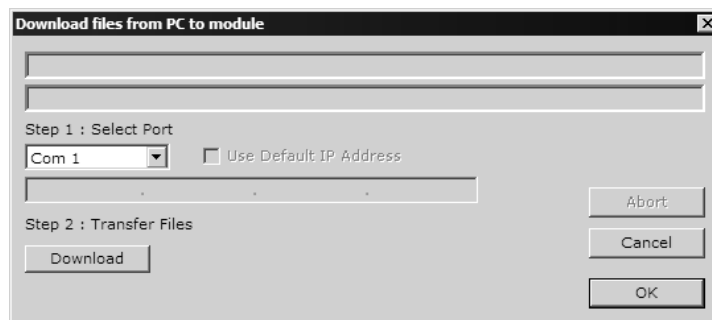
Slave address used by the host to access this port. Valid values are 0 to 255.

2.8 Download the Project to the Module

In order for the module to use the settings you configured, you must download (copy) the updated Project file from your PC to the module.

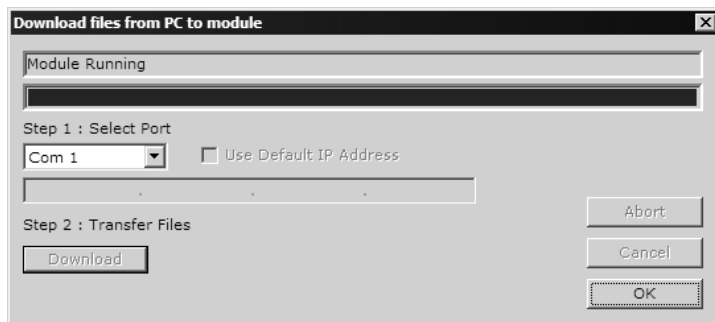
To Download the Project File

- 1 In the tree view in ProSoft Configuration Builder, click once to select the MVI56-BSAPS module.
- 2 Open the **Project menu**, and then choose **Module / Download**. The program will scan your PC for a valid com port (this may take a few seconds). When PCB has found a valid com port, the following dialog box will open.



- 3 Choose the com port to use from the dropdown list, and then click the Download button.

The module will perform a platform check to read and load its new settings. When the platform check is complete, the status bar in ProSoft Configuration Builder will be updated with the message "Module Running".



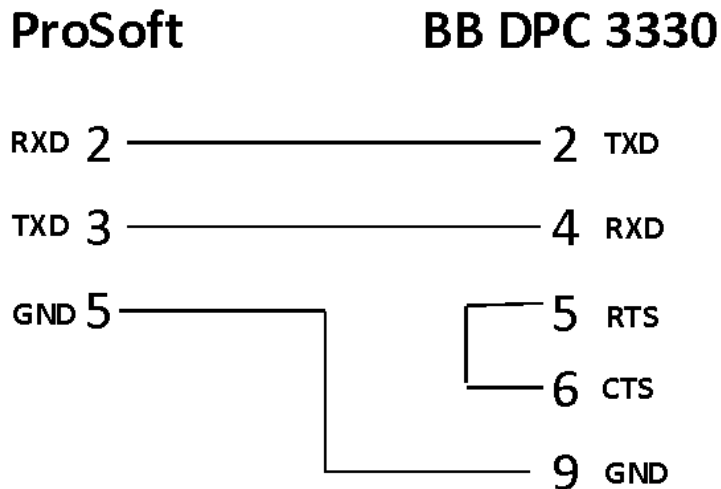
2.9 Configuring a BSAP Master

This section describes a few required steps for setting up a BSAP-enabled master (a Bristol Babcock DPC 3330 in this example) device to communicate with ProSoft Technology's BSAPS – enabled products. You should have a general understanding of the Bristol Babcock ACCOL Workbench software.

2.9.1 BSAP Protocol

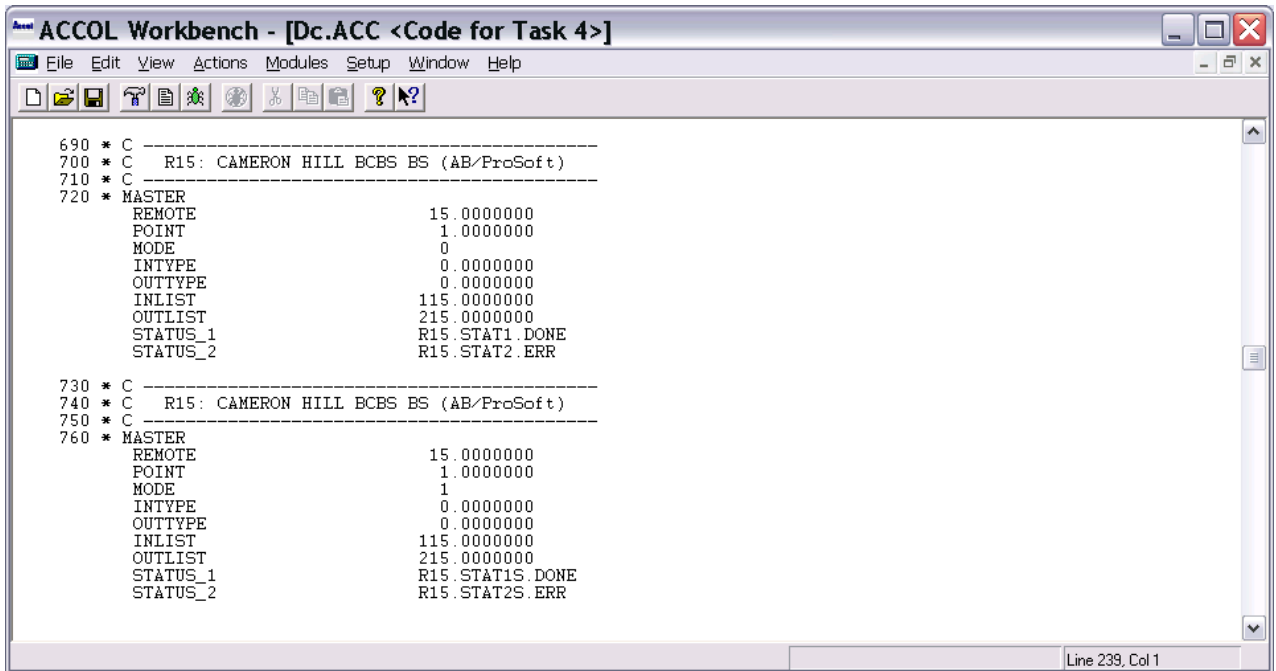
In order for the Bristol Babcock DPC 3330 and ProSoft Technology's BSAPS – enabled products to communicate, please review the following information.

2.9.2 Required pin assignments



- The DPC 3330 supports command types "SEND", "POLL" AND "POLL+SEND"
- **The ProSoft BSAPS driver ONLY supports "SEND" and "POLL"**
- **A "POLL+SEND" will not work.**
- The DPC 3330 "Inlist" must match the ProSoft "BSAPS Data Element" list
- For the DPC 3330 to read and write to the ProSoft BSAPS – enabled device, both a Master Module "Mode 0" (Poll) AND "Mode 1" (Send) must be defined within ACCOL Workbench

The following illustration shows an example of the ACCOL Workbench defining both a Master Module "Mode 0" (Poll) AND "Mode 1" (Send).



The screenshot shows the ACCOL Workbench interface with a menu bar (File, Edit, View, Actions, Modules, Setup, Window, Help) and a toolbar. The main window displays configuration code for two master modules. The first module (lines 690-720) is Mode 0 (Poll) and the second (lines 730-760) is Mode 1 (Send). Both modules are configured for device R15: CAMERON HILL BCBS BS (AB/ProSoft). The configuration parameters for both modes are identical, with the only difference being the MODE parameter (0 for Poll, 1 for Send).

```
690 * C -----
700 * C R15: CAMERON HILL BCBS BS (AB/ProSoft)
710 * C -----
720 * MASTER
    REMOTE          15.0000000
    POINT           1.0000000
    MODE            0
    INTYPE          0.0000000
    OUTTYPE         0.0000000
    INLIST          115.0000000
    OUTLIST         215.0000000
    STATUS_1        R15_STAT1.DONE
    STATUS_2        R15_STAT2.ERR

730 * C -----
740 * C R15: CAMERON HILL BCBS BS (AB/ProSoft)
750 * C -----
760 * MASTER
    REMOTE          15.0000000
    POINT           1.0000000
    MODE            1
    INTYPE          0.0000000
    OUTTYPE         0.0000000
    INLIST          115.0000000
    OUTLIST         215.0000000
    STATUS_1        R15_STAT1S.DONE
    STATUS_2        R15_STAT2S.ERR
```

Line 239, Col 1

3 Ladder Logic

In This Chapter

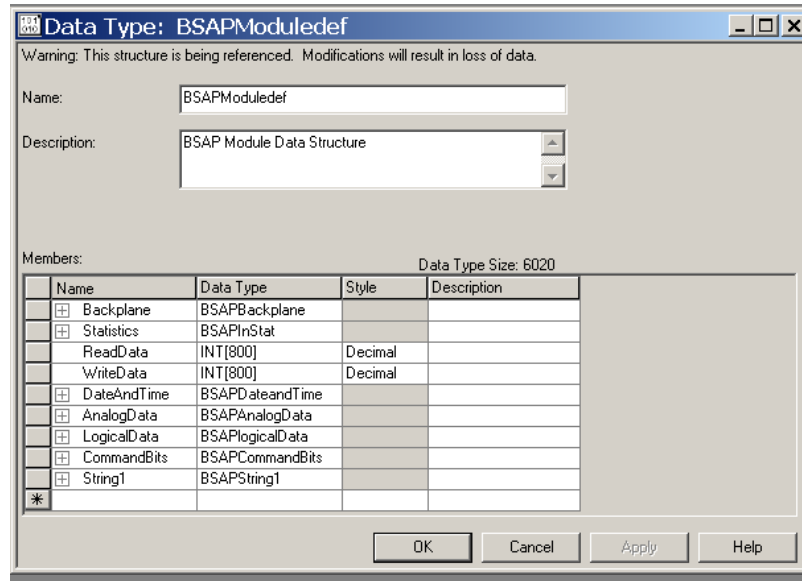
- ❖ Module Data Object (BSAPModuleDef) 37
- ❖ BSAP Message Data..... 40

Ladder logic is required for application of the MVI56-BSAPS module. Tasks that must be handled by the ladder logic are module data transfer, special block handling and status data receipt. Additionally, a power-up handler may be needed to handle the initialization of the module's data and to clear any processor fault conditions.

The sample ladder logic, on the ProSoft Solutions CD-ROM, is extensively commented, to provide information on the purpose and function of each rung. For most applications, the sample ladder will work without modification.

3.1 Module Data Object (BSAPModuleDef)

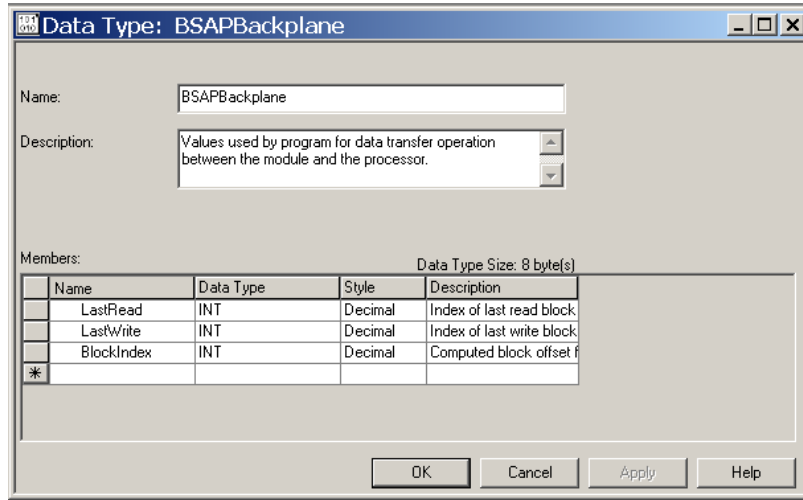
All data related to the MVI56-BSAPS is stored in a user defined data type. An instance of the data type is required before the module can be used. This is done by declaring a variable of the data type in the Controller Tags Edit Tags dialog box. The object has the following structure.



This object contains objects that define user data, status, and command control data related to the module. Each of these object types is discussed in the following topics of the document.

3.1.1 Backplane Control Object

This data object stores the variables required for the data transfer between the processor and the MVI56-BSAPS module. The structure of the object is shown in the following example:



3.1.2 User Data Objects

These objects hold data to be transferred between the processor and the MVI56-BSAPS module. The user data is the read and write data transferred between the processor and the module as "pages" of data up to 200 words long.

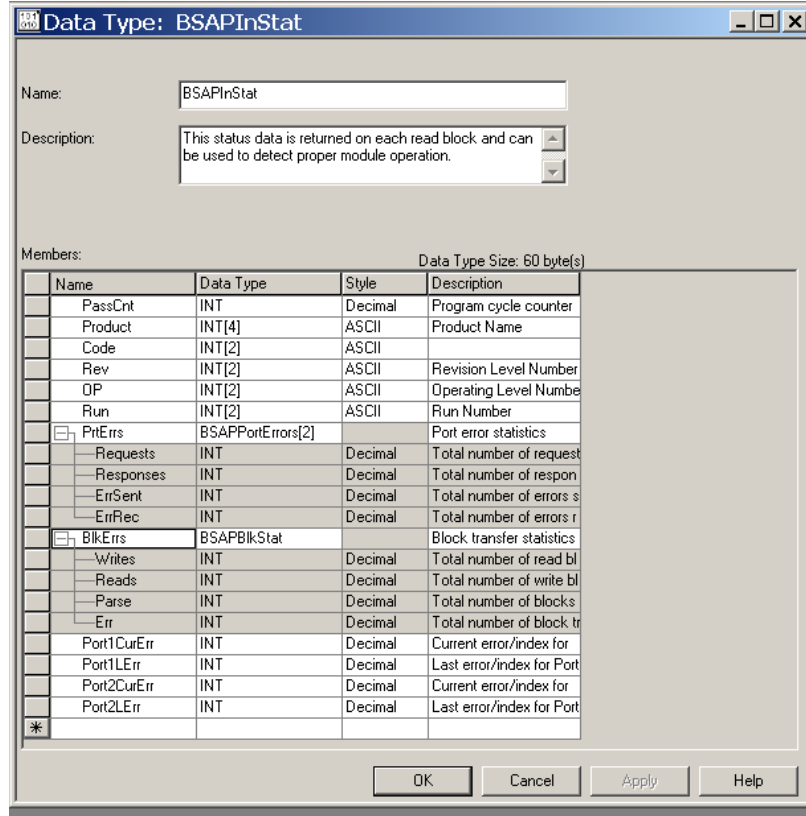
| | | | |
|-----------|----------|---------|--|
| ReadData | INT[800] | Decimal | |
| WriteData | INT[800] | Decimal | |

The read data (**ReadData**) is an array containing values that are read from module database. For ease of use, this array should be dimensioned as an even increment of 200 words. This data is paged up to 200 words at a time from the module to the processor. The ReadData task is responsible for placing the data received into the proper position in the read data array. Use this data for status and control in the ladder logic of the processor.

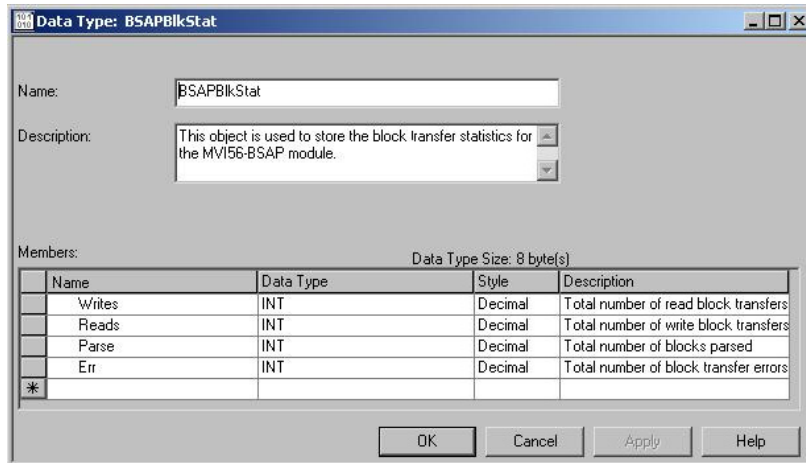
The write data (**WriteData**) is an array contain value that is written into the module database. For ease of use, this array should be dimensioned as even increments of 200 words. This data is paged up to 200 words at a time from the processor to the module. The WriteData task is responsible for placing the write data into the output image for transfer to the module. This data is passed from the processor to the module for status and control information for use in other nodes on the network.

3.1.3 Status Data

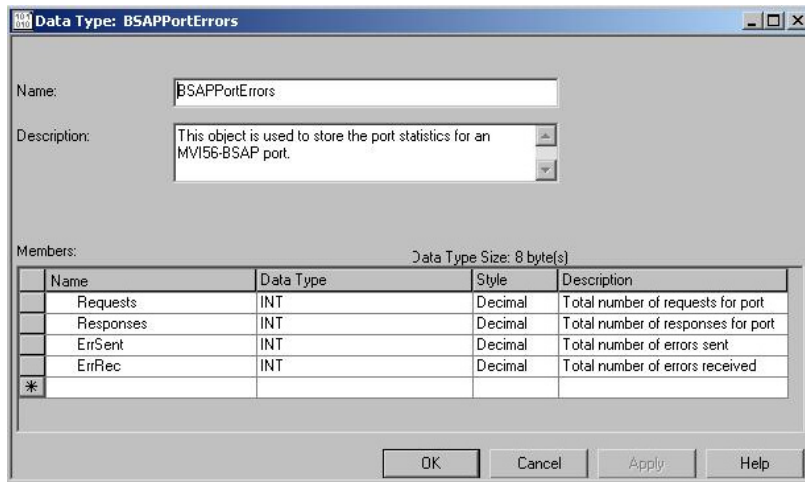
This object views the status of the module. The **BSAPInStat** object shown is updated each time a read block is received by the processor. Use this data to monitor the state of the module at a "real-time rate".



This object contains a structure that includes the status information for the data transfer operations between the processor and the module. The structure of this object is shown in the following example:



Additionally, the status object contains a structure for each of the servers in the module. The structure used for each server is shown in the following example:



Refer to MVI56-BSAPS Status Data Area for a complete listing of the data stored in status object.

3.2 BSAP Message Data

This module's program includes the pass-through mode. In this mode, write messages sent to a slave port are passed directly through to the processor. It is the responsibility of the ladder logic to process the message received using this feature. This information is passed from the module to the processor using block identification codes of 9001 for Time Synchronization (TS/NRT). The following topics explain the data objects involved.

3.2.1 BSAP Time Synchronization (BSAPDateAndTime)

These objects hold data transferred from the MVI56-BSAPS module. The object shown in the example is updated each time a read block number of 9001 is received by the processor.

Data Type: BSAPDateandTime

Name: BSAPDateandTime

Description: Date and Time

Members: Data Type Size: 20 byte(s)

| Name | Data Type | Style | Description |
|-------------|-----------|---------|-------------|
| Day | INT | Decimal | |
| Month | INT | Decimal | |
| Year | INT | Decimal | |
| Hour | INT | Decimal | |
| Minute | INT | Decimal | |
| Second | INT | Decimal | |
| JulianDay | INT | Decimal | |
| Julian4sec | INT | Decimal | |
| Julian20sec | INT | Decimal | |
| * | | | |

OK Cancel Apply Help

4 Diagnostics and Troubleshooting

In This Chapter

- ❖ Reading Status Data from the Module 43
- ❖ LED Status Indicators..... 52

The module provides information on diagnostics and troubleshooting in the following forms:

- Status data values are transferred from the module to the processor.
- Data contained in the module can be viewed through the Configuration/Debug port attached to a terminal emulator.
- LED status indicators on the front of the module provide information on the module's status.

4.1 Reading Status Data from the Module

The MVI56-BSAPS module returns a 22-word Status Data Block that may be used to determine the module's operating status. This data is located in the module's database at the location specified in the configuration.

This data is transferred to the ControlLogix processor continuously with each read block.

The Configuration/Debug port provides the following functionality:

- Full view of the module's configuration data
- View of the module's status data
- Complete display of the module's internal database (registers 0 to 8999)
- Version Information
- Control over the module (warm boot, cold boot, transfer configuration)

4.1.1 Required Hardware

You can connect directly from your computer's serial port to the serial port on the module to view configuration information, perform maintenance, and send (upload) or receive (download) configuration files.

ProSoft Technology recommends the following minimum hardware to connect your computer to the module:

- 80486 based processor (Pentium preferred)
- 1 megabyte of memory
- At least one UART hardware-based serial communications port available. USB-based virtual UART systems (USB to serial port adapters) often do not function reliably, especially during binary file transfers, such as when uploading/downloading configuration files or module firmware upgrades.
- A null modem serial cable.

4.1.2 The Configuration/Debug Menu

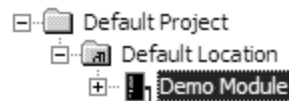
The Configuration and Debug menu for this module is arranged as a tree structure, with the Main Menu at the top of the tree, and one or more sub-menus for each menu command. The first menu you see when you connect to the module is the Main menu.

Because this is a text-based menu system, you enter commands by typing the command letter from your computer keyboard in the diagnostic window in ProSoft Configuration Builder (PCB). The module does not respond to mouse movements or clicks. The command executes as soon as you press the command letter — you do not need to press **[Enter]**. When you type a command letter, a new screen will be displayed in your terminal application.

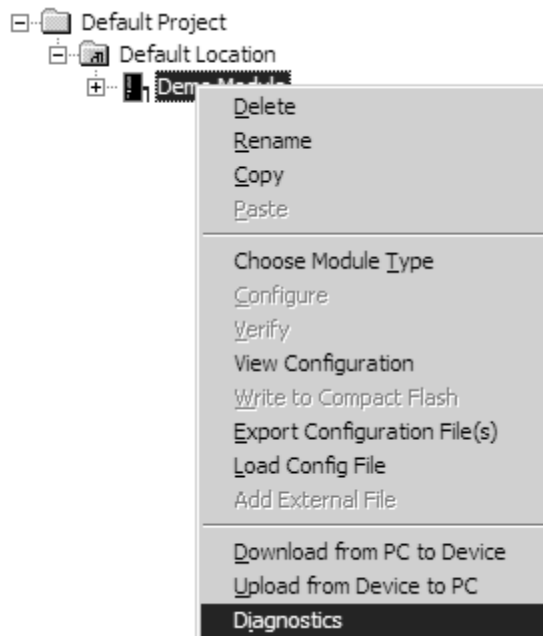
Using the Diagnostic Window in ProSoft Configuration Builder

To connect to the module's Configuration/Debug serial port:

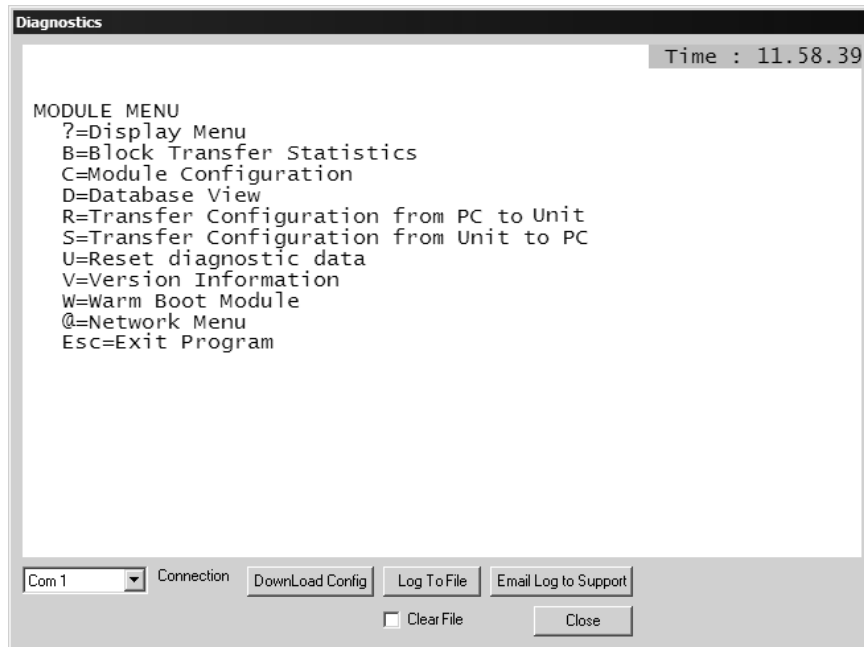
- 1 Start PCB program with the application file to be tested. Right click over the module icon.



- 2 On the shortcut menu, choose Diagnostics.



- 3 This action opens the Diagnostics dialog box. Press "?" to display the Main Menu.



Important: The illustrations of configuration/debug menus in this section are intended as a general guide, and may not exactly match the configuration/debug menus in your own module.

If there is no response from the module, follow these steps:

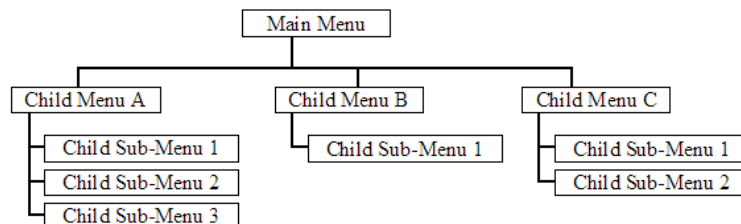
- 1 Verify that the null modem cable is connected properly between your computer's serial port and the module. A regular serial cable will not work.
- 2 On computers with more than one serial port, verify that your communication program is connected to the same port that is connected to the module.

If you are still not able to establish a connection, contact ProSoft Technology for assistance.

Navigation

All of the sub-menus for this module contain commands to redisplay the menu or return to the previous menu. You can always return from a sub-menu to the next higher menu by pressing **[M]** on your keyboard.

The organization of the menu structure is represented in simplified form in the following illustration:



The remainder of this section shows you the menus available for this module, and briefly discusses the commands available to you.

Keystrokes

The keyboard commands on these menus are almost always non-case sensitive. You can enter most commands in lower case or capital letters.

The menus use a few special characters ([**?**], [**-**], [**+**], [**@**]) that must be entered exactly as shown. Some of these characters will require you to use the [**Shift**], [**Ctrl**] or [**Alt**] keys to enter them correctly. For example, on US English keyboards, enter the [**?**] command as [**Shift**]/.

Also, take care to distinguish capital letter [**I**] from lower case letter [**i**] (L) and number [**1**]; likewise for capital letter [**O**] and number [**0**]. Although these characters look nearly the same on the screen, they perform different actions on the module.

4.1.3 Main Menu

When you first connect to the module from your computer, your terminal screen will be blank. To activate the main menu, press the [**?**] key on your computer's keyboard. If the module is connected properly, the following menu will appear on your terminal screen:

```
MVI56-BSAP MENU
?=Display Menu
U=Version Information
D=Database Menu
C=Clear diagnostic data
R=Backplane Menu
0=Protocol_Serial_BSAP 1
1=Protocol_Serial_BSAP 2
S=Transfer Configuration from Unit to PC
R=Transfer Configuration from PC to Unit
W=Warm Boot Module
Esc=Exit Program
```

Caution: Some of the commands available to you from this menu are designed for advanced debugging and system testing only, and can cause the module to stop communicating with the processor or with other devices, resulting in potential data loss or other failures. Only use these commands if you are specifically directed to do so by ProSoft Technology Technical Support staff. Some of these command keys are not listed on the menu, but are active nevertheless. Please be careful when pressing keys so that you do not accidentally execute an unwanted command.

Viewing Version Information

Press [**V**] to view Version information for the module.

Use this command to view the current version of the software for the module, as well as other important values. You may be asked to provide this information when calling for technical support on the product.

Values at the bottom of the display are important in determining module operation. The Program Scan Counter value is incremented each time a module's program cycle is complete.

Tip: Repeat this command at one-second intervals to determine the frequency of program execution.

Opening the Database Menu

Press **[D]** to open the Database View menu. Use this menu command to view the current contents of the module's database.

Resetting diagnostic data

Press **[U]** to reset the status counters for the client and/or servers in the module.

Opening the Backplane Menu

Press **[B]** from the Main Menu to view the Backplane Data Exchange List. Use this command to display the configuration and statistics of the backplane data transfer operations.

Tip: Repeat this command at one-second intervals to determine the number of blocks transferred each second.

Opening the Protocol Serial BSAP Menu

Press **[0]** or **[1]** from the Main Menu to open the Protocol_Serial_BSAP menu for BSAP Ports 1 and 2.

Use this command to view communication status and statistics for the selected port. This information can be useful for trouble-shooting communication problems.

Sending the Configuration File

Press **[S]** to upload (send) an updated configuration file to the module. For more information on receiving and sending configuration files, please see Uploading and Downloading the Configuration File.

Receiving the Configuration File

Press **[R]** to download (receive) the current configuration file from the module. For more information on receiving and sending configuration files, please see Uploading and Downloading the Configuration File.

Warm Booting the Module

Caution: Some of the commands available to you from this menu are designed for advanced debugging and system testing only, and can cause the module to stop communicating with the processor or with other devices, resulting in potential data loss or other failures. Only use these commands if you are specifically directed to do so by ProSoft Technology Technical Support staff. Some of these command keys are not listed on the menu, but are active nevertheless. Please be careful when pressing keys so that you do not accidentally execute an unwanted command.

Press **[W]** from the Main Menu to warm boot (restart) the module. This command will cause the program to exit and reload, refreshing configuration parameters that must be set on program initialization. Only use this command if you must force the module to re-boot.

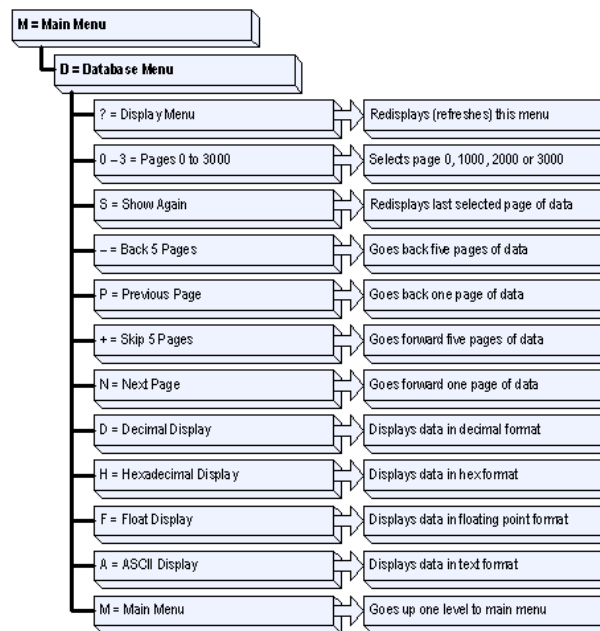
Exiting the Program

Caution: Some of the commands available to you from this menu are designed for advanced debugging and system testing only, and can cause the module to stop communicating with the processor or with other devices, resulting in potential data loss or other failures. Only use these commands if you are specifically directed to do so by ProSoft Technology Technical Support staff. Some of these command keys are not listed on the menu, but are active nevertheless. Please be careful when pressing keys so that you do not accidentally execute an unwanted command.

Press **[Esc]** to restart the module and force all drivers to be loaded. The module will use the configuration stored in the module's Flash ROM to configure the module.

4.1.4 Database View Menu

Press **[D]** from the Main Menu to open the Database View menu. Use this menu command to view the current contents of the module's database. Press **[?]** to view a list of commands available on this menu.



Viewing Register Pages

To view sets of register pages, use the keys described below:

| Command | Description |
|---------|--------------------------------|
| [0] | Display registers 0 to 99 |
| [1] | Display registers 1000 to 1099 |
| [2] | Display registers 2000 to 2099 |

And so on. The total number of register pages available to view depends on your module's configuration.

Displaying the Current Page of Registers Again

| DATABASE | DISPLAY | 0 TO 99 | <DECIMAL> | | | | | | |
|----------|---------|---------|-----------|----|----|---|---|---|----|
| 100 | 101 | 102 | 4 | 5 | 6 | 7 | 8 | 9 | 10 |
| 11 | 12 | 13 | 14 | 15 | 16 | 0 | 0 | 0 | 0 |
| 0 | 0 | 0 | 0 | 0 | 0 | 0 | 0 | 0 | 0 |
| 0 | 0 | 0 | 0 | 0 | 0 | 0 | 0 | 0 | 0 |
| 0 | 0 | 0 | 0 | 0 | 0 | 0 | 0 | 0 | 0 |
| 0 | 0 | 0 | 0 | 0 | 0 | 0 | 0 | 0 | 0 |
| 0 | 0 | 0 | 0 | 0 | 0 | 0 | 0 | 0 | 0 |
| 0 | 0 | 0 | 0 | 0 | 0 | 0 | 0 | 0 | 0 |
| 0 | 0 | 0 | 0 | 0 | 0 | 0 | 0 | 0 | 0 |
| 0 | 0 | 0 | 0 | 0 | 0 | 0 | 0 | 0 | 0 |
| 0 | 0 | 0 | 0 | 0 | 0 | 0 | 0 | 0 | 0 |

This screen displays the current page of 100 registers in the database.

Moving Back Through 5 Pages of Registers

Press **[-]** from the Database View menu to skip back to the previous 500 registers of data.

Viewing the Previous 100 Registers of Data

Press **[P]** from the Database View menu to display the previous 100 registers of data.

Skipping 500 Registers of Data

Hold down **[Shift]** and press **[=]** to skip forward to the next 500 registers of data.

Viewing the Next 100 Registers of Data

Press **[N]** from the Database View menu to select and display the next 100 registers of data.

Viewing Data in Decimal Format

Press **[D]** to display the data on the current page in decimal format.

Viewing Data in Hexadecimal Format

Press **[H]** to display the data on the current page in hexadecimal format.

Viewing Data in Floating Point Format

Press **[F]** from the Database View menu. Use this command to display the data on the current page in floating point format. The program assumes that the values are aligned on even register boundaries. If floating-point values are not aligned as such, they are not displayed properly.

Viewing Data in ASCII (Text) Format

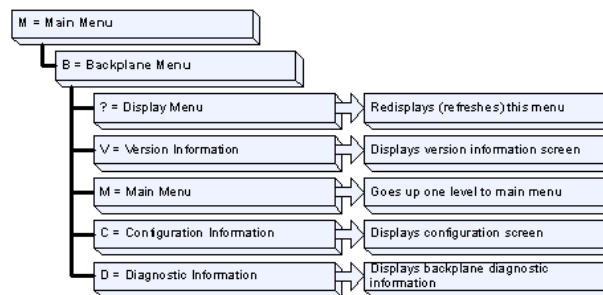
Press **[A]** to display the data on the current page in ASCII format. This is useful for regions of the database that contain ASCII data.

Returning to the Main Menu

Press **[M]** to return to the Main Menu.

4.1.5 Backplane Menu

Press **[B]** from the Main Menu to view the Backplane Data Exchange List. Use this command to display the configuration and statistics of the backplane data transfer operations. Press **[?]** to view a list of commands available on this menu.



Redisplaying the Menu

Press **[?]** to display the current menu. Use this command when you are looking at a screen of data, and want to view the menu choices available to you.

Viewing Version Information

Press **[V]** to view Version information for the module.

Use this command to view the current version of the software for the module, as well as other important values. You may be asked to provide this information when calling for technical support on the product.

Values at the bottom of the display are important in determining module operation. The Program Scan Counter value is incremented each time a module's program cycle is complete.

Tip: Repeat this command at one-second intervals to determine the frequency of program execution.

Returning to the Main Menu

Press **[M]** to return to the Main Menu.

Viewing Configuration Information

Press **[C]** to view configuration information for the selected port, protocol, driver or device.

Viewing Backplane Diagnostic Information

Press **[D]** to view Backplane Diagnostic information.

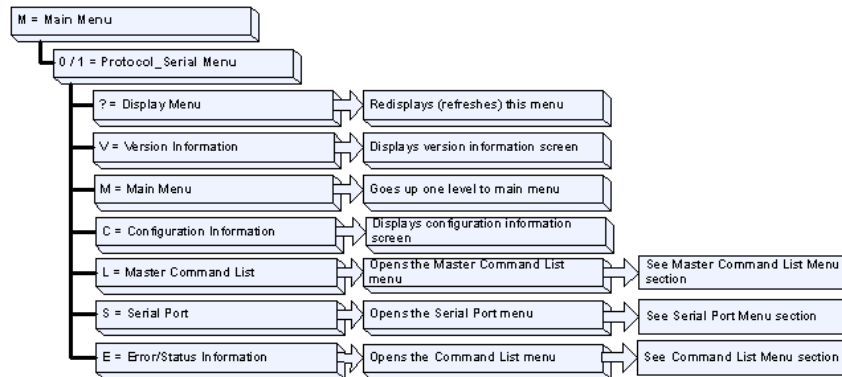
Use this command to display the configuration and statistics of the backplane data transfer operations between the module and the processor. The information on this screen can help determine if there are communication problems between the processor and the module.

Tip: Repeat this command at one-second intervals to determine the number of blocks transferred each second

4.1.6 Protocol Serial BSAP Menu

Press **[0]** or **[1]** to view protocol serial information for ports 1 and 2, respectively. Use this command to view a variety of error and status screens for the port.

Press **[?]** to view a list of commands available on this menu.



Redisplaying the Menu

Press **[?]** to display the current menu. Use this command when you are looking at a screen of data, and want to view the menu choices available to you.

Viewing Version Information

Press **[V]** to view Version information for the module.

Use this command to view the current version of the software for the module, as well as other important values. You may be asked to provide this information when calling for technical support on the product.

Values at the bottom of the display are important in determining module operation. The Program Scan Counter value is incremented each time a module's program cycle is complete.

Tip: Repeat this command at one-second intervals to determine the frequency of program execution.

Returning to the Main Menu

Press **[M]** to return to the Main Menu.

Viewing Configuration Information

Press **[C]** to view configuration information for the selected port, protocol, driver or device.

Opening the Command List Menu

Press **[L]** to open the Command List menu. Use this command to view the configured command list for the module.

Opening the Serial Port Menu

Press **[S]** to open the Serial Port menu. Use this command to view and change additional serial port driver settings.

Viewing Error and Status Data

Press **[E]** to display the error/status data for the module.

4.2 LED Status Indicators

The LEDs indicate the module's operating status as follows:

| ProSoft Module | Color | Status | Indication |
|----------------|---------------|--------|---|
| CFG | Green | On | Data is being transferred between the module and a remote terminal using the Configuration/Debug port. |
| | | Off | No data is being transferred on the Configuration/Debug port. |
| P1 | Green | On | Data being transferred between master and port 1. |
| | | Off | No data |
| P2 | Green | On | Data being transferred between master and port 2. |
| | | Off | No data |
| APP Status | Amber | Off | The MVI56-BSAPS is working normally. |
| | | On | The MVI56-BSAPS module program has recognized a communication error. |
| BP ACT | Amber | On | The LED is on when the module is performing a write operation on the backplane. |
| | | Off | The LED is off when the module is performing a read operation on the backplane. Under normal operation, the LED should blink rapidly on and off. |
| OK | Red/ Green | Off | The card is not receiving any power and is not securely plugged into the rack. |
| | | Green | The module is operating normally. |
| | | Red | The program has detected an error or is being configured. If the LED remains red for over 10 seconds, the program has probably halted. Remove the card from the rack and re-insert the card to restart the module's program. |
| BAT | Red | Off | The battery voltage is OK and functioning. |
| | | On | The battery voltage is low or battery is not present. Allow battery to charge by keeping module plugged into rack for 24 hours. If BAT LED still does not go off, contact ProSoft Technology, as this is not a user serviceable item. |

During module configuration, the OK LED will be red and the APP and BP ACT LEDs will be on. If the LEDs are latched in this mode for a long period of time, look at the configuration error words in the configuration request block. The structure of the block is shown in the following table.

| Offset | Description | Length |
|----------|-----------------------------|--------|
| 0 | Reserved | 1 |
| 1 | 9000 | 1 |
| 2 | Module Configuration Errors | 1 |
| 3 | Port 1 Configuration Errors | 1 |
| 4 | Port 2 Configuration Errors | 1 |
| 5 to 248 | Spare | 244 |
| 249 | -2 or -3 | 1 |

If the APP, BP ACT and OK LEDs blink at a rate of every one-second, this indicates a serious problem with the module. Call ProSoft Technology support to arrange for repairs.

4.2.1 Clearing a Fault Condition

Typically, if the OK LED on the front of the module turns red for more than ten seconds, a hardware problem has been detected in the module, or the program has exited.

To clear the condition, follow these steps:

- 1** Turn off power to the rack
- 2** Remove the card from the rack
- 3** Verify that all jumpers are set correctly
- 4** If the module requires a Compact Flash card, verify that the card is installed correctly
- 5** Re-insert the card in the rack and turn the power back on
- 6** Verify the configuration data being transferred to the module from the ControlLogix processor.

If the module's OK LED does not turn green, verify that the module is inserted completely into the rack. If this does not cure the problem, contact ProSoft Technology Support.

4.2.2 Troubleshooting

Use the following troubleshooting steps if you encounter problems when the module is powered up. If these steps do not resolve your problem, please contact ProSoft Technology Technical Support.

Processor Errors

| Problem Description | Steps to take |
|----------------------------|---|
| Processor Fault | Verify that the module is plugged into the slot that has been configured for the module. Verify that the slot in the rack configuration has been set up correctly in the ladder logic. |
| Processor I/O LED flashes | This indicates a problem with backplane communications. Verify that all modules in the rack are configured in the ladder logic. |

Module Errors

| Problem Description | Steps to take |
|---|--|
| BP ACT LED remains off or blinks slowly | This indicates that backplane transfer operations are failing. Connect to the module's Configuration/Debug port to check this. To establish backplane communications, verify the following items: <ul style="list-style-type: none">▪ The processor is in Run mode.▪ The backplane driver is loaded in the module.▪ The module is configured for read and write block data transfer.▪ The ladder logic handles all read and write block situations.▪ The module is configured in the processor. |
| OK LED remains red | The program has halted or a critical error has occurred. Connect to the Configuration/Debug port to see if the module is running. If the program has halted, turn off power to the rack, remove the card from the rack and re-insert the card in the rack, and then restore power to the rack. |

5 Reference

In This Chapter

| | |
|-------------------------------------|----|
| ❖ Product Specifications | 55 |
| ❖ Functional Overview | 57 |
| ❖ Cable Connections | 65 |
| ❖ MVI56-BSAPS Status Data Area..... | 70 |

5.1 Product Specifications

The MVI56 Bristol Babcock Serial Slave Module allows ControlLogix I/O compatible processors to interface easily with Bristol Babcock Serial communication devices.

5.1.1 Features and Benefits

The MVI56-BSAPS module acts as an input/output module between the BSAP network and the ControlLogix backplane. The module acts as a slave receiving commands from a BSAP master device. The data transfer from the ControlLogix processor is asynchronous from the actions on the BSAP network. An internal database in the module exchanges data between the processor and the BSAP network.

BSAP operates in a polled environment. Each link in the network supports a different poll rate. The rate selected depends on a variety of application-dependent factors.

BSAP has been designed and implemented according to the functional layers of the International Standards Organization (ISO) model. Because each layer is independent of its adjacent layers, both synchronous and asynchronous transmission modes can be supported.

5.1.2 General Specifications

- Single Slot - 1756 backplane compatible
- The module is recognized as an Input/Output module and has access to processor memory for data transfer between processor and module
- Ladder Logic is used for data transfer between module and processor. Sample ladder file included.
- Configuration data obtained from configuration text file downloaded to module. Sample configuration file included
- Local or remote rack

5.1.3 Hardware Specifications

| Specification | Description |
|--|---|
| Backplane Current Load | 800 mA @ 5 V DC 3mA @ 24V DC |
| Operating Temperature | 0 to 60°C (32 to 140°F) |
| Storage Temperature | -40 to 85°C (-40 to 185°F) |
| Shock | 30g Operational 50g non-operational Vibration: 5 g from 10 to 150 Hz |
| Relative Humidity | 5% to 95% (non-condensing) |
| LED Indicators | Module Status Backplane Transfer Status Application Status Serial Activity |
| Debug/Configuration port (CFG) | |
| CFG Port (CFG) | RJ45 (DB-9M with supplied cable) RS-232 only |
| Application ports (PRT1 & PRT2) | |
| Full hardware handshaking control, providing radio, modem and multi-drop support | |
| Software configurable communication parameters | Baud rate: 110 to 115,200 baud, depending on protocol RS-232, 485 and 422 Parity: none, odd or even Data bits: 5, 6, 7, or 8 Stop bits: 1 or 2 RTS on/off delay: 0 to 65535 milliseconds |
| App Ports (P1,P2) (Serial modules) | RJ45 (DB-9M with supplied cable) RS-232 handshaking configurable 500V Optical isolation from backplane |
| Shipped with Unit | RJ45 to DB-9M cables for each port 6-foot RS-232 configuration cable |

5.1.4 Functional Specifications

The Bristol Babcock Synchronous/Asynchronous Communication Protocol (BSAP) is the foundation for a proprietary network that has a tree structured topology. This open-ended topology supports a variety of configurations which may include one or more nodes at each of up to six levels. Messages can be sent between nodes on the same level or on different levels. Messages can be sent between nodes (local message only). Each message is uniquely identified and has an error checking code associated with it.

Some of the general specifications include:

- Slave implementation
- Support for the storage and transfer of internal database registers to/from the ControlLogix processor's controller tags
- Two ports to emulate a BSAP slave RTU
- Peer-to-Peer communication for Local BSAP formatted messages - slave to master only

Configurable parameters include:

| Parameter | Value |
|------------------------|-------------------------|
| Analog Input Count | 0 to 255 |
| Logical Input Count | 0 to 255 |
| String Count | 0 to 30 |
| Slave Address | 1 to 255 |
| Baud Rate | 110 to 115,200 |
| Parity | None, Odd, Even |
| Data Bits | 5 to 8 |
| Stop Bits | 1 or 2 |
| RTS On and Off Timing | 0 to 65535 milliseconds |
| Minimum Response Delay | 0 to 65535 milliseconds |
| Use of CTS Modem Line | Yes or No |

5.2 Functional Overview

This section provides an overview of how the MVI56-BSAPS module transfers data using the BSAP protocol. You should understand the important concepts in this chapter before you begin installing and configuring the module.

5.2.1 Introduction

The **Bristol Babcock Asynchronous Communication Protocol (BSAP)** is the foundation for a proprietary network that has a tree structured topology. This open-ended topology supports a variety of configurations which may include one or more nodes at each of up to six levels. Messages can be sent between nodes on the same level or on different levels. Each message is uniquely identified and has an error checking code associated with it. MVI56-BSAPS supports only bottom level, one to one communication.

BSAP operates in a polled environment. Each link in the network supports a different poll rate. The rate selected depends on a variety of application-dependent factors.

BSAP has been designed and implemented according to the functional layers of the International Standards Organization (ISO) model. Because each layer is independent of its adjacent layers, both synchronous and asynchronous transmission modes can be supported. MVI56-BSAPS supports only asynchronous transmission mode.

5.2.2 Protocol Overview

- Variable message length to 253 bytes
- Analog Floating-point (4 bytes)
- Logical data (1 byte)
- Packed logical data (8 bits/byte)
- Alarm time stamp (5 bytes)
- Alarm data (6 - 10 bytes)

- Local addressing
- 127 nodes from each node at a level
- Communication modes: peer to peer, remote database access (RDB), polled report by exception (RBE)
- Automatic alarm handling
- 16-bit CRC-CCITT
- Asynchronous communications
- RS-232, RS-422, RS-423, RS-485 multi-drop
- RDB requires data address lookup function
- 4 types of poll messages
- Each node maintains transaction statistics (more than MVI std)
- Each transaction is serialized
- ACK handshaking
- Message priority levels
- Data types: signal by address or name, data arrays (array number, row, column), select signal data (matches criteria), Physical memory (N/A), input ports (N/A)
- 3 write command types
- Immediate Response Mode.

5.2.3 General Concepts

The following discussion explains several concepts that are important for understanding the operation of the MVI56-BSAPS module.

Module Power Up

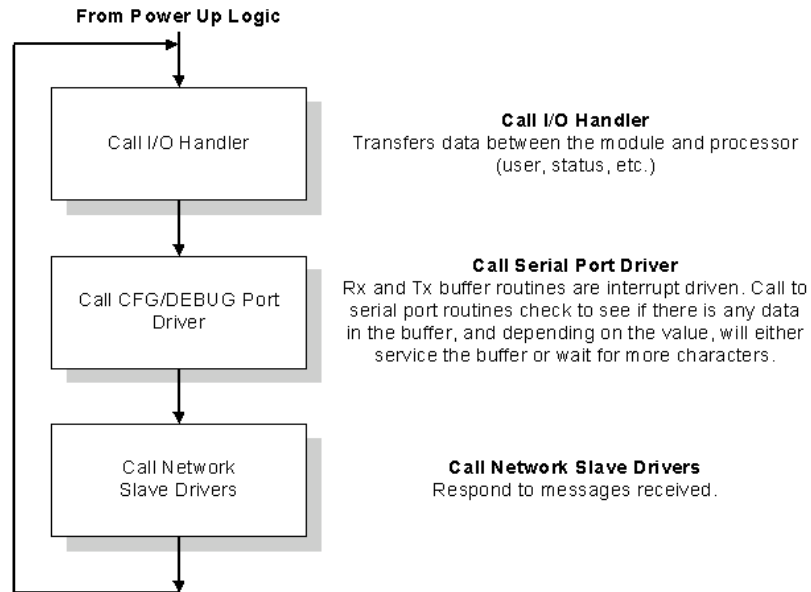
On power up the module begins performing the following logical functions:

- 1 Initialize hardware components:
- 2 Initialize ControlLogix backplane driver.
 - Test and clear all RAM.
 - Initialize the serial communication ports.
- 3 Read module configuration.
- 4 Initialize module register space.
- 5 Enable slave driver on selected ports.

After the module has received the configuration, the module begins receiving and transmitting messages with BSAP devices on the network.

Main Logic Loop

Upon completing the power up configuration process, the module enters an infinite loop that performs the functions shown in the following diagram.

ControlLogix Processor Not in Run

Whenever the module detects that the processor has gone out of the Run mode (that is, Fault or PGM), the BSAP ports can be shut down as prescribed in the user configuration. When the processor is returned to a running state, the module resumes communications on the network.

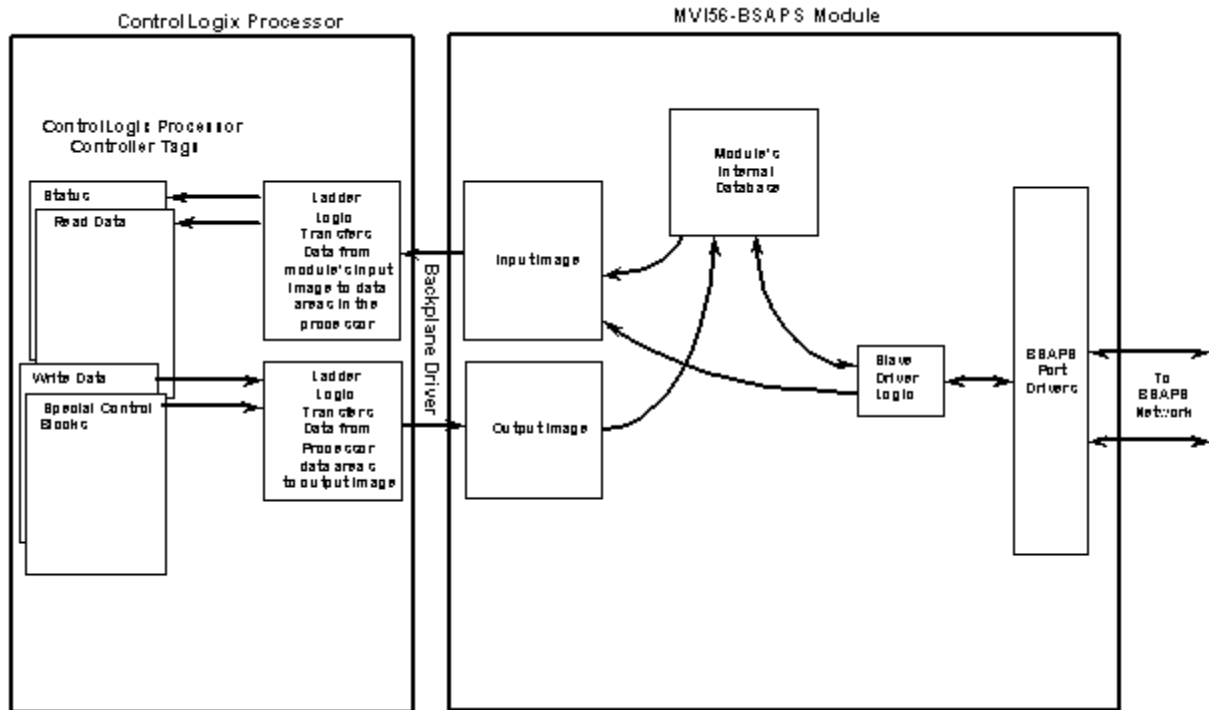
Backplane Data Transfer

The MVI56-BSAPS module communicates directly over the ControlLogix backplane. Data is paged between the module and the ControlLogix processor across the backplane using the module's input and output images. The update frequency of the images is determined by the scheduled scan rate defined the user for the module and the communication load on the module. Typical updates are in the range of 2 to 10 milliseconds.

This bi-directional transference of data is accomplished by the module filling in data in the module's input image to send to the processor. Data in the input image is placed in the controller tags in the processor by the ladder logic. The input image for the module is set to 250 words. This large data area permits fast throughput of data between the module and the processor.

The processor inserts data to the module's output image to transfer to the module. The module's program extracts the data and places it in the module's internal database. The output image for the module is set to 248 words. This large data area permits fast throughput of data from the processor to the module.

The following illustration shows the data transfer method used to move data between the ControlLogix processor, the MVI56-BSAPS module, and the BSAP network.



As shown in the diagram, all data transferred between the module and the processor over the backplane is through the input and output images. Ladder logic must be written in the ControlLogix processor to interface the input and output image data with data defined in the controller tags. All data used by the module is stored in its internal database.

MVI56-BSAPS Fixed Database Map

| Start Address | End Address | Data |
|---------------|-------------|---------------------|
| 0 | 509 | Input Analog Data |
| 510 | 638 | Input Logical Data |
| 640 | 2740 | Input String Data |
| 3000 | 3509 | Output Analog Data |
| 3510 | 3638 | Output Logical Data |
| 3640 | 5740 | Output String Data |

Data contained in this database is paged through the input and output images by coordination of the ControlLogix ladder logic and the MVI56-BSAPS module's program. Up to 248 words of data can be transferred from the module to the processor at a time. Up to 247 words of data per backplane scan can be transferred from the processor to the module. Each image has a defined structure depending on the data content and the function of the data transfer described in the following topics.

Normal Data Transfer

Normal data transfer includes the paging of the user data found in the module's internal database in registers 0 to 2740 and the status data. These data are transferred through read blocks (input image). Write blocks (output image) transfer data into module's internal database in register 3000 to 5740. These data are gathered in a response command to a master. The **Module Setup** section provides a description of the data objects used with the blocks and the ladder logic required. The structure and function of each block is described in the following topics.

Read Block

These blocks of data transfer information from the module to the ControlLogix processor. The structure of the input image used to transfer this data is shown in the following table.

| Offset | Description | Length |
|------------|----------------------------|--------|
| 0 | Reserved | 1 |
| 1 | Write Block ID | 1 |
| 2 to 201 | Read Data | 200 |
| 202 | Program Scan Counter | 1 |
| 203 to 204 | Product Code | 2 |
| 205 to 206 | Product Version | 2 |
| 207 to 208 | Operating System | 2 |
| 209 to 210 | Run Number | 2 |
| 211 to 214 | Port 1 Error Status | 4 |
| 215 to 218 | Port 2 Error Status | 4 |
| 219 to 224 | Data Transfer Status | 6 |
| 225 | Port 1 Current Error/Index | 1 |
| 226 | Port 1 Last Error/Index | 1 |
| 227 | Port 2 Current Error/Index | 1 |
| 228 | Port 2 Last Error/Index | 1 |
| 229 to 248 | Spare | 20 |
| 249 | Read Block ID | 1 |

The Read Block ID is an index value used to determine the location of where the data will be placed in the ControlLogix processor controller tag array of module read data. Each transfer can move up to 200 words (block offsets 2 to 201) of data. In addition to moving user data, the block also contains status data for the module. This last set of data is transferred with each new block of data and is used for high-speed data movement.

The Write Block ID associated with the block requests data from the ControlLogix processor. Under normal program operation, the module sequentially sends read blocks and requests write blocks. For example, if three read and two write blocks are used with the application, the sequence is as follows:

R1W1 → R2W2 → R3W1 → R1W2 → R2W1 → R3W2 → R1W1

Write Block

These blocks of data transfer information from the ControlLogix processor to the module. The structure of the output image used to transfer this data is shown in the following table.

| Offset | Description | Length |
|------------|----------------|--------|
| 0 | Write Block ID | 1 |
| 1 to 200 | Write Data | 200 |
| 201 to 247 | Spare | 47 |

The Write Block ID is an index value used to determine the location in the module's database where the data will be placed. Each transfer can move up to 200 words (block offsets 1 to 200) of data.

Warm Boot

This block is sent from the ControlLogix processor to the module (output image) when the module is required to perform a warm-boot (software reset) operation. This block is commonly sent to the module any time configuration data modifications are made in the controller tags data area. This will force the module to read the new configuration information and to restart. The structure of the control block is shown in the following table.

| Offset | Description | Length |
|----------|-------------|--------|
| 0 | 9998 | 1 |
| 1 to 247 | Spare | 247 |

Cold Boot

This block is sent from the ControlLogix processor to the module (output image) when the module is required to perform the cold boot (hardware reset) operation. This block is sent to the module when a hardware problem is detected by the ladder logic that requires a hardware reset. The structure of the control block is shown in the following table.

| Offset | Description | Length |
|----------|-------------|--------|
| 0 | 9999 | 1 |
| 1 to 247 | Spare | 247 |

Pass-Through Control Blocks

Pass-Through Time Synchronization

The module will pass blocks with identification codes of 9001 to the processor for function 88h command time synchronization. Ladder logic must handle the receipt of this function code to the processor. The structure of the pass-through control block is shown in the following table.

Block 9001

| Offset | Description | Length |
|--------|-------------|--------|
| 0 | 0 | 1 |
| 1 | 9001 | 1 |
| 2 | Date | 1 |
| 3 | Month | 1 |

| Offset | Description | Length |
|-----------|------------------|--------|
| 4 | Year | 1 |
| 5 | Hour | 1 |
| 6 | Minute | 1 |
| 7 | Second | 1 |
| 8 | Julian Day | 1 |
| 9 | Julian 4 Second | 1 |
| 10 | Julian 20 Second | 1 |
| 11 to 248 | Spare | 238 |
| 249 | 9001 | 1 |

Formatted Pass-Through Control Block

If the configuration parameter pass-through for either Port 1 or Port 2 is enabled, the module will pass blocks with identification code of 9500 for Port 1 or 9501 for Port 2 for each received write command. Any BSAP Command Remote Database Access (CRDB, AO) FUN Function Code 80H (write signal via MSD address or FUN Function Code 84H (write signal via name) will be passed from the port to the processor using this block ID number. Ladder must be written to handle the receipt of these BSAP write functions to the processor and to respond as expected to commands issued by the remote BSAP Master device. The structure of the formatted pass-through control block is shown in the following table.

| Offset | Description | Length |
|--------|---|--------|
| 0 | 9500 or 9501 (Port 1 or Port 2) | 1 |
| 1 | Last Read Block | 1 |
| 2 | Total register building pass through block | 1 |
| 3 | Number of Element | 1 |
| 4 | First Element Address | 1 |
| 5 | First Element Type (0 = Analog, 1 = Logical) | 1 |
| 6 | First Data (two words for Analog or one word for Logical) | 1 or 2 |
| ... | | |
| M -2 | Nth Element Address | 1 |
| M -1 | Nth Element Type (0 = Analog, 1 = Logical) | 1 |
| M | Nth Data (two words for Analog or one word for Logical) | 1 or 2 |
| 249 | 9500 or 9501 (Port 1 or Port 2) | 1 |

Pass-Through Control Block Examples

First example: host sends logical Off to Port 2 for address 11. The block will look like this:

| | |
|------|---|
| 9051 | Passthrough block for Port 2 |
| x | Previous read block number prior to pass-through block was sent. |
| 5 | 5 registers count from this register to the last register of the last element |
| 1 | 1 element is written by the host |
| 11 | address 11 is configured in the configuration |
| 1 | type logical |
| 0 | set to Off |

Second example: host sends Analog 775 to Port 1 for address 14. The block will look like this:

| | |
|--------|---|
| 9050 | Passthrough block for Port 2 |
| x | Previous read block number prior to pass-through block was sent. |
| 6 | 6 registers count from this register to the last register of the last element |
| 1 | 1 element is written by the host |
| 14 | address 14 is configured in the configuration |
| 0 | type analog |
| -16834 | first register for analog floating point |
| 17473 | second register for analog floating point |

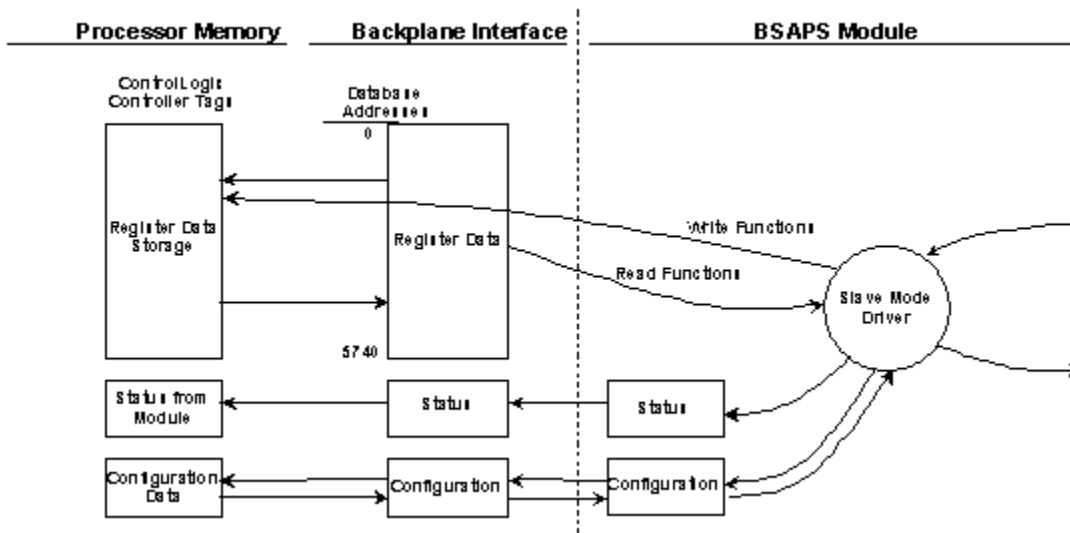
5.2.4 Data Flow Between the MVI56-BSAPS Module and the ControlLogix Processor

The following section describes the flow of data between the two pieces of hardware (ControlLogix processor and MVI56-BSAPS module). Each port on the module is configured to emulate a BSAP RTU slave device. The operation of each port is dependent on this configuration.

Slave Driver

The Slave Driver Mode allows the MVI56-BSAPS module to respond to data read and write commands issued by a master on the BSAP network. The following flowchart describes the flow of data into and out of the module. The Module Setup section provides a list of the parameters that must be defined for a slave port.

All write requests will be placed in the database. The following illustration shows the data flow for a slave port.



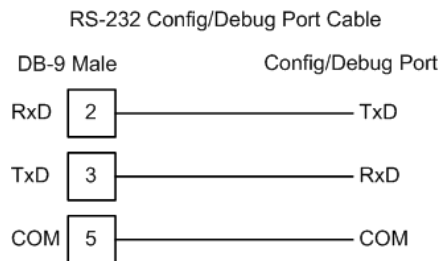
5.3 Cable Connections

The application ports on the MVI56-BSAPS module support RS-232, RS-422, and RS-485 interfaces. Please inspect the module to ensure that the jumpers are set correctly to correspond with the type of interface you are using.

Note: When using RS-232 with radio modem applications, some radios or modems require hardware handshaking (control and monitoring of modem signal lines). Enable this in the configuration of the module by setting the UseCTS parameter to 1.

5.3.1 RS-232 Configuration/Debug Port

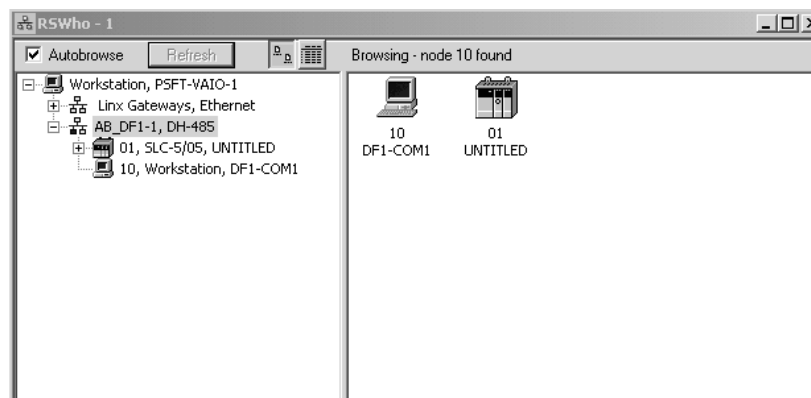
This port is physically an RJ45 connection. An RJ45 to DB-9 adapter cable is included with the module. This port permits a PC based terminal emulation program to view configuration and status data in the module and to control the module. The cable for communications on this port is shown in the following diagram:



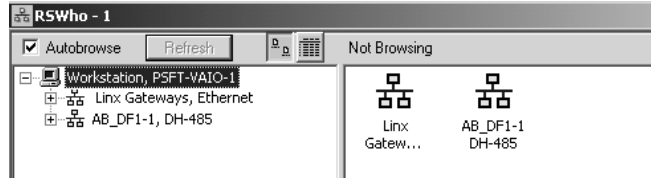
Disabling the RSLinx Driver for the Com Port on the PC

The communication port driver in RSLinx can occasionally prevent other applications from using the PC's COM port. If you are not able to connect to the module's configuration/debug port using ProSoft Configuration Builder (PCB), HyperTerminal or another terminal emulator, follow these steps to disable the RSLinx Driver.

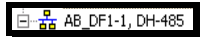
- 1 Open RSLinx and go to Communications>RSWho
- 2 Make sure that you are not actively browsing using the driver that you wish to stop. The following shows an actively browsed network:



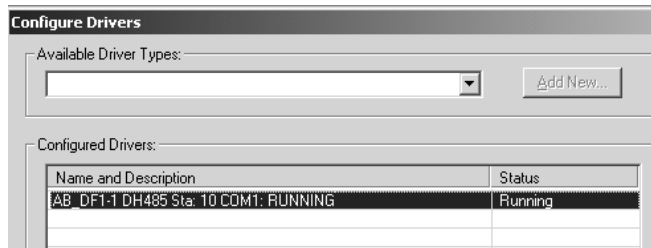
- 3 Notice how the DF1 driver is opened, and the driver is looking for a processor on node 1. If the network is being browsed, then you will not be able to stop this driver. To stop the driver your RSWho screen should look like this:



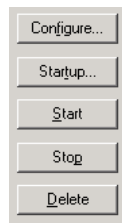
Branches are displayed or hidden by clicking on the  or the  icons.



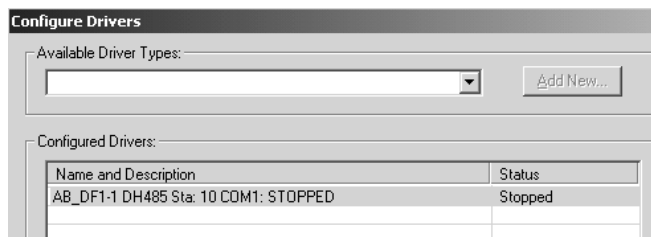
- 4 When you have verified that the driver is not being browsed, go to **Communications>Configure Drivers**
You may see something like this:



If you see the status as running, you will not be able to use this com port for anything other than communication to the processor. To stop the driver press the "Stop" on the side of the window:



- 5 After you have stopped the driver you will see the following:

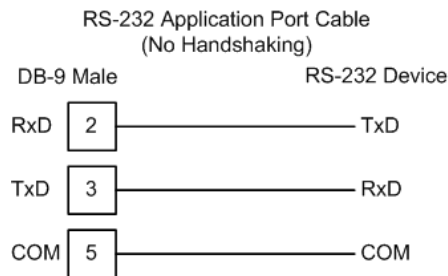


- 6 Upon seeing this, you may now use that com port to connect to the debug port of the module.

Note: You may need to shut down and restart your PC before it will allow you to stop the driver (usually only on Windows NT machines). If you have followed all of the above steps, and it will not stop the driver, then make sure you do not have RSLogix open. If RSLogix is not open, and you still cannot stop the driver, then reboot your PC.

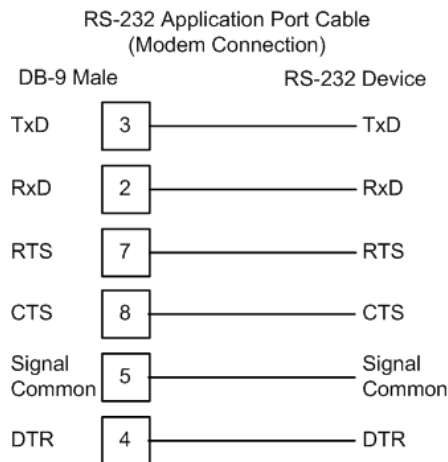
5.3.2 RS-232

When the RS-232 interface is selected, the use of hardware handshaking (control and monitoring of modem signal lines) is user definable. If no hardware handshaking will be used, the cable to connect to the port is as shown below:



RS-232: Modem Connection

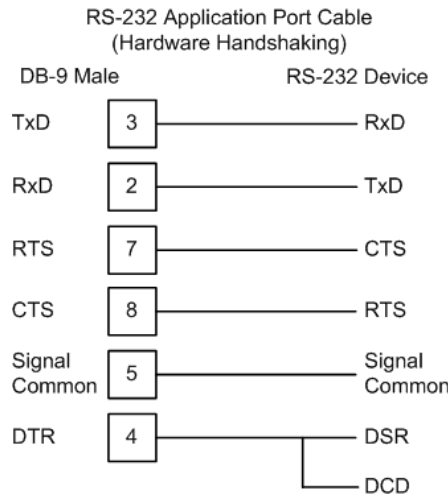
This type of connection is required between the module and a modem or other communication device.



The "Use CTS Line" parameter for the port configuration should be set to 'Y' for most modem applications.

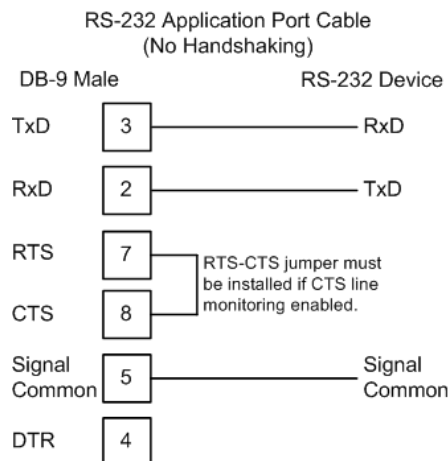
RS-232: Null Modem Connection (Hardware Handshaking)

This type of connection is used when the device connected to the module requires hardware handshaking (control and monitoring of modem signal lines).



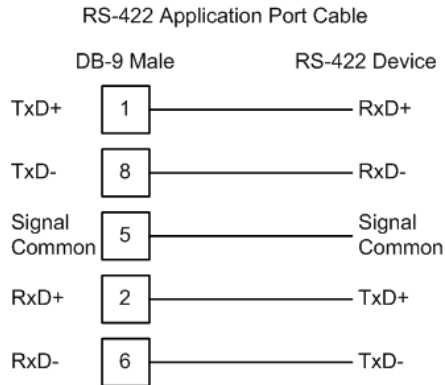
RS-232: Null Modem Connection (No Hardware Handshaking)

This type of connection can be used to connect the module to a computer or field device communication port.



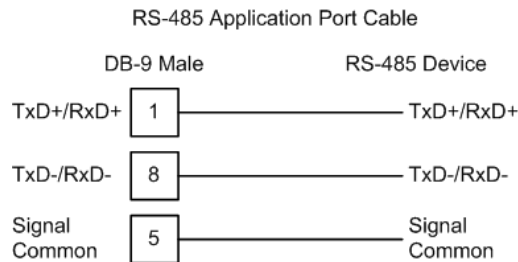
Note: If the port is configured with the "Use CTS Line" set to 'Y', then a jumper is required between the RTS and the CTS line on the module connection.

5.3.3 RS-422



5.3.4 RS-485

The RS-485 interface requires a single two or three wire cable. The Common connection is optional and dependent on the RS-485 network. The cable required for this interface is shown below:

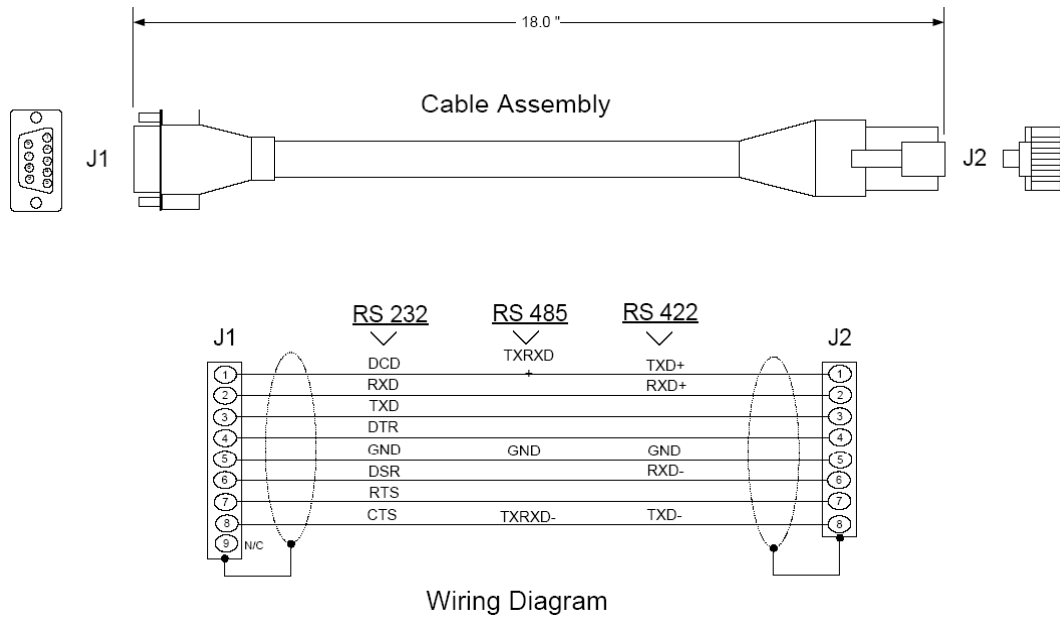


Note: Terminating resistors are generally not required on the RS-485 network, unless you are experiencing communication problems that can be attributed to signal echoes or reflections. In this case, install a 120 ohm terminating resistor on the RS-485 line.

RS-485 and RS-422 Tip

If communication in the RS-422/RS-485 mode does not work at first, despite all attempts, try switching termination polarities. Some manufacturers interpret +/- and A/B polarities differently.

5.3.5 DB9 to RJ45 Adaptor (Cable 14)



5.4 MVI56-BSAPS Status Data Area

This section contains a listing of the data contained in the <ModelNumber status data object.

| Offset | Content | Description |
|------------|--|--|
| 202 | Program cycle counter | This value is incremented each time a complete program cycle occurs in the module. |
| 203 to 206 | Product Name | |
| 207 to 208 | Product Code as ASCII string | This register contains the product code of "BSAP" |
| 209 to 210 | Revision level as ASCII string | This register contains the product version for the current software. |
| 211 to 212 | Operating system level as ASCII string | This register contains the month and year values for the program operating system. |
| 213 to 214 | Run number as ASCII string | This register contains the run number value for the current software. |
| 215 | Number of requests: Port 1 | Contains the number of port messages sent out of the port. |
| 216 | Number of responses: Port 1 | Contains the total number of messages received on the port. |
| 217 | Number of errors sent: Port 1 | Contains the total number of message errors sent out of the port. |
| 218 | Number of errors received: Port 1 | Contains the total number of message errors received on the port. |
| 219 | Number of requests: Port 2 | Contains the total number of messages sent out the port. |

| Offset | Content | Description |
|--------|--------------------------------------|--|
| 220 | Number of responses: Port 2 | Contains the total number of messages received on the port. |
| 221 | Number of errors sent: Port 2 | Contains the total number of message errors sent out the port. |
| 222 | Number of errors received: Port 2 | Contains the total number of message errors received on the port. |
| 223 | Backplane Transfer Writes | Contains the total number of write blocks transferred from the processor to the module. |
| 224 | Backplane Transfer Reads | Contains the total number of read blocks transferred from the module to the processor. |
| 225 | Backplane Blocks Parsed | |
| 226 | Backplane Transfer Errors | Contains the total number of block errors recognized by the module. |
| 227 | Current Error: Port 1 | For a slave port, this field contains the value of the current error code returned. For a master port, this field contains the index of the currently executing command. |
| 228 | Last Error: Port 1 | For a slave port, this field contains the value of the last error code returned. For a master port, this field contains the index of the command with the error. |
| 229 | Current Error: Port 2 | For a slave port, this field contains the value of the current error code returned. For a master port, this field contains the index of the current executing command. |
| 230 | Last Error: Port 2 | For a slave port, this field contains the value of the last error code returned. For a master port, this field contains the index of the command with an error. |

A data file should be allocated in the ladder logic to hold this block of data. The size of the block of data is 35 words.

6 Support, Service & Warranty

In This Chapter

- ❖ How to Contact Us: Technical Support..... 73
- ❖ Return Material Authorization (RMA) Policies and Conditions..... 74
- ❖ LIMITED WARRANTY..... 76

ProSoft Technology, Inc. (ProSoft) is committed to providing the most efficient and effective support possible. Before calling, please gather the following information to assist in expediting this process:

- 1 Product Version Number
- 2 System architecture
- 3 Network details

If the issue is hardware related, we will also need information regarding:

- 1 Module configuration and contents of file
 - Module Operation
 - Configuration/Debug status information
 - LED patterns
- 2 Information about the processor and user data files as viewed through and LED patterns on the processor.
- 3 Details about the serial devices interfaced, if any.

6.1 How to Contact Us: Technical Support

| | |
|-----------------|---|
| Internet | Web Site: http://www.prosoft-technology.com/support (http://www.prosoft-technology.com/support) E-mail address: support@prosoft-technology.com (mailto:support@prosoft-technology.com) |
|-----------------|---|

Asia Pacific

+603.7724.2080, support.asia@prosoft-technology.com
 (<mailto:support.asia@prosoft-technology.com>)

Languages spoken include: Chinese, English

Europe (location in Toulouse, France)

+33 (0) 5.34.36.87.20, support.EMEA@prosoft-technology.com
 (<mailto:support.emea@prosoft-technology.com>)

Languages spoken include: French, English

North America/Latin America (excluding Brasil) (location in California)

+1.661.716.5100, support@prosoft-technology.com (mailto:support@prosoft-technology.com)

Languages spoken include: English, Spanish

For technical support calls within the United States, an after-hours answering system allows pager access to one of our qualified technical and/or application support engineers at any time to answer your questions.

Brasil (location in Sao Paulo)

+55-11-5084-5178 , eduardo@prosoft-technology.com (mailto:eduardo@prosoft-technology.com)

Languages spoken include: Portuguese, English

6.2 Return Material Authorization (RMA) Policies and Conditions

The following RMA Policies and Conditions (collectively, "RMA Policies") apply to any returned Product. These RMA Policies are subject to change by ProSoft without notice. For warranty information, see "Limited Warranty". In the event of any inconsistency between the RMA Policies and the Warranty, the Warranty shall govern.

6.2.1 All Product Returns:

- a) In order to return a Product for repair, exchange or otherwise, the Customer must obtain a Returned Material Authorization (RMA) number from ProSoft and comply with ProSoft shipping instructions.
- b) In the event that the Customer experiences a problem with the Product for any reason, Customer should contact ProSoft Technical Support at one of the telephone numbers listed above (page 73). A Technical Support Engineer will request that you perform several tests in an attempt to isolate the problem. If after completing these tests, the Product is found to be the source of the problem, we will issue an RMA.
- c) All returned Products must be shipped freight prepaid, in the original shipping container or equivalent, to the location specified by ProSoft, and be accompanied by proof of purchase and receipt date. The RMA number is to be prominently marked on the outside of the shipping box. Customer agrees to insure the Product or assume the risk of loss or damage in transit. Products shipped to ProSoft using a shipment method other than that specified by ProSoft or shipped without an RMA number will be returned to the Customer, freight collect. Contact ProSoft Technical Support for further information.
- d) A 10% restocking fee applies to all warranty credit returns whereby a Customer has an application change, ordered too many, does not need, etc.

6.2.2 Procedures for Return of Units Under Warranty:

A Technical Support Engineer must approve the return of Product under ProSoft's Warranty:

- a) A replacement module will be shipped and invoiced. A purchase order will be required.
- b) Credit for a product under warranty will be issued upon receipt of authorized product by ProSoft at designated location referenced on the Return Material Authorization.

6.2.3 Procedures for Return of Units Out of Warranty:

- a) Customer sends unit in for evaluation
- b) If no defect is found, Customer will be charged the equivalent of \$100 USD, plus freight charges, duties and taxes as applicable. A new purchase order will be required.
- c) If unit is repaired, charge to Customer will be 30% of current list price (USD) plus freight charges, duties and taxes as applicable. A new purchase order will be required or authorization to use the purchase order submitted for evaluation fee.

The following is a list of non-repairable units:

- 3150 - All
- 3750
- 3600 - All
- 3700
- 3170 - All
- 3250
- 1560 - Can be repaired, only if defect is the power supply
- 1550 - Can be repaired, only if defect is the power supply
- 3350
- 3300
- 1500 - All

6.2.4 Purchasing Warranty Extension:

- a) ProSoft's standard warranty period is three (3) years from the date of shipment as detailed in "Limited Warranty (page 76)". The Warranty Period may be extended at the time of equipment purchase for an additional charge, as follows:
 - Additional 1 year = 10% of list price
 - Additional 2 years = 20% of list price
 - Additional 3 years = 30% of list price

6.3 LIMITED WARRANTY

This Limited Warranty ("Warranty") governs all sales of hardware, software and other products (collectively, "Product") manufactured and/or offered for sale by ProSoft, and all related services provided by ProSoft, including maintenance, repair, warranty exchange, and service programs (collectively, "Services"). By purchasing or using the Product or Services, the individual or entity purchasing or using the Product or Services ("Customer") agrees to all of the terms and provisions (collectively, the "Terms") of this Limited Warranty. All sales of software or other intellectual property are, in addition, subject to any license agreement accompanying such software or other intellectual property.

6.3.1 *What Is Covered By This Warranty*

- a) *Warranty On New Products:* ProSoft warrants, to the original purchaser, that the Product that is the subject of the sale will (1) conform to and perform in accordance with published specifications prepared, approved and issued by ProSoft, and (2) will be free from defects in material or workmanship; provided these warranties only cover Product that is sold as new. This Warranty expires three years from the date of shipment (the "Warranty Period"). If the Customer discovers within the Warranty Period a failure of the Product to conform to specifications, or a defect in material or workmanship of the Product, the Customer must promptly notify ProSoft by fax, email or telephone. In no event may that notification be received by ProSoft later than 39 months. Within a reasonable time after notification, ProSoft will correct any failure of the Product to conform to specifications or any defect in material or workmanship of the Product, with either new or used replacement parts. Such repair, including both parts and labor, will be performed at ProSoft's expense. All warranty service will be performed at service centers designated by ProSoft.
- b) *Warranty On Services:* Materials and labor performed by ProSoft to repair a verified malfunction or defect are warranted in the terms specified above for new Product, provided said warranty will be for the period remaining on the original new equipment warranty or, if the original warranty is no longer in effect, for a period of 90 days from the date of repair.

6.3.2 *What Is Not Covered By This Warranty*

- a) ProSoft makes no representation or warranty, expressed or implied, that the operation of software purchased from ProSoft will be uninterrupted or error free or that the functions contained in the software will meet or satisfy the purchaser's intended use or requirements; the Customer assumes complete responsibility for decisions made or actions taken based on information obtained using ProSoft software.

- b) This Warranty does not cover the failure of the Product to perform specified functions, or any other non-conformance, defects, losses or damages caused by or attributable to any of the following: (i) shipping; (ii) improper installation or other failure of Customer to adhere to ProSoft's specifications or instructions; (iii) unauthorized repair or maintenance; (iv) attachments, equipment, options, parts, software, or user-created programming (including, but not limited to, programs developed with any IEC 61131-3, "C" or any variant of "C" programming languages) not furnished by ProSoft; (v) use of the Product for purposes other than those for which it was designed; (vi) any other abuse, misapplication, neglect or misuse by the Customer; (vii) accident, improper testing or causes external to the Product such as, but not limited to, exposure to extremes of temperature or humidity, power failure or power surges; or (viii) disasters such as fire, flood, earthquake, wind and lightning.
- c) The information in this Agreement is subject to change without notice. ProSoft shall not be liable for technical or editorial errors or omissions made herein; nor for incidental or consequential damages resulting from the furnishing, performance or use of this material. The user guide included with your original product purchase from ProSoft contains information protected by copyright. No part of the guide may be duplicated or reproduced in any form without prior written consent from ProSoft.

6.3.3 Disclaimer Regarding High Risk Activities

Product manufactured or supplied by ProSoft is not fault tolerant and is not designed, manufactured or intended for use in hazardous environments requiring fail-safe performance including and without limitation: the operation of nuclear facilities, aircraft navigation or communication systems, air traffic control, direct life support machines or weapons systems in which the failure of the product could lead directly or indirectly to death, personal injury or severe physical or environmental damage (collectively, "high risk activities"). ProSoft specifically disclaims any express or implied warranty of fitness for high risk activities.

6.3.4 Intellectual Property Indemnity

Buyer shall indemnify and hold harmless ProSoft and its employees from and against all liabilities, losses, claims, costs and expenses (including attorney's fees and expenses) related to any claim, investigation, litigation or proceeding (whether or not ProSoft is a party) which arises or is alleged to arise from Buyer's acts or omissions under these Terms or in any way with respect to the Products. Without limiting the foregoing, Buyer (at its own expense) shall indemnify and hold harmless ProSoft and defend or settle any action brought against such Companies to the extent based on a claim that any Product made to Buyer specifications infringed intellectual property rights of another party. ProSoft makes no warranty that the product is or will be delivered free of any person's claiming of patent, trademark, or similar infringement. The Buyer assumes all risks (including the risk of suit) that the product or any use of the product will infringe existing or subsequently issued patents, trademarks, or copyrights.

- a) Any documentation included with Product purchased from ProSoft is protected by copyright and may not be duplicated or reproduced in any form without prior written consent from ProSoft.
- b) ProSoft's technical specifications and documentation that are included with the Product are subject to editing and modification without notice.
- c) Transfer of title shall not operate to convey to Customer any right to make, or have made, any Product supplied by ProSoft.
- d) Customer is granted no right or license to use any software or other intellectual property in any manner or for any purpose not expressly permitted by any license agreement accompanying such software or other intellectual property.
- e) Customer agrees that it shall not, and shall not authorize others to, copy software provided by ProSoft (except as expressly permitted in any license agreement accompanying such software); transfer software to a third party separately from the Product; modify, alter, translate, decode, decompile, disassemble, reverse-engineer or otherwise attempt to derive the source code of the software or create derivative works based on the software; export the software or underlying technology in contravention of applicable US and international export laws and regulations; or use the software other than as authorized in connection with use of Product.
- f) **Additional Restrictions Relating To Software And Other Intellectual Property**

In addition to compliance with the Terms of this Warranty, Customers purchasing software or other intellectual property shall comply with any license agreement accompanying such software or other intellectual property. Failure to do so may void this Warranty with respect to such software and/or other intellectual property.

6.3.5 Disclaimer of all Other Warranties

The Warranty set forth in What Is Covered By This Warranty (page 76) are in lieu of all other warranties, express or implied, including but not limited to the implied warranties of merchantability and fitness for a particular purpose.

6.3.6 Limitation of Remedies **

In no event will ProSoft or its Dealer be liable for any special, incidental or consequential damages based on breach of warranty, breach of contract, negligence, strict tort or any other legal theory. Damages that ProSoft or its Dealer will not be responsible for included, but are not limited to: Loss of profits; loss of savings or revenue; loss of use of the product or any associated equipment; loss of data; cost of capital; cost of any substitute equipment, facilities, or services; downtime; the claims of third parties including, customers of the Purchaser; and, injury to property.

** Some areas do not allow time limitations on an implied warranty, or allow the exclusion or limitation of incidental or consequential damages. In such areas, the above limitations may not apply. This Warranty gives you specific legal rights, and you may also have other rights which vary from place to place.

6.3.7 Time Limit for Bringing Suit

Any action for breach of warranty must be commenced within 39 months following shipment of the Product.

6.3.8 No Other Warranties

Unless modified in writing and signed by both parties, this Warranty is understood to be the complete and exclusive agreement between the parties, suspending all oral or written prior agreements and all other communications between the parties relating to the subject matter of this Warranty, including statements made by salesperson. No employee of ProSoft or any other party is authorized to make any warranty in addition to those made in this Warranty. The Customer is warned, therefore, to check this Warranty carefully to see that it correctly reflects those terms that are important to the Customer.

6.3.9 Allocation of Risks

This Warranty allocates the risk of product failure between ProSoft and the Customer. This allocation is recognized by both parties and is reflected in the price of the goods. The Customer acknowledges that it has read this Warranty, understands it, and is bound by its Terms.

6.3.10 Controlling Law and Severability

This Warranty shall be governed by and construed in accordance with the laws of the United States and the domestic laws of the State of California, without reference to its conflicts of law provisions. If for any reason a court of competent jurisdiction finds any provisions of this Warranty, or a portion thereof, to be unenforceable, that provision shall be enforced to the maximum extent permissible and the remainder of this Warranty shall remain in full force and effect. Any cause of action with respect to the Product or Services must be instituted in a court of competent jurisdiction in the State of California.

Index

[

[Backplane 56] • 29
 [BSAP Data Element] • 31
 [BSAP Port x] • 32
 [BSAPS Config] • 30
 [Module] • 29

A

Adding a Module • 26
 Adding a Project • 26
 All Product Returns • 74
 Allocation of Risks • 79
 Array Element Column • 30
 Array Element Row • 30
 Attribute Name • 32

B

Backplane Control Object • 38
 Backplane Data Transfer • 59
 Backplane Fail Count • 29
 Backplane Menu • 50
 Base Name • 31
 Battery Life Advisory • 3
 Baud Rate • 32
 BSAP Message Data • 40
 BSAP Protocol • 34
 BSAP Time Synchronization (BSAPDateAndTime) • 41

C

Cable Connections • 65
 Clearing a Fault Condition • 53
 Cold Boot • 62
 Comment Entries • 28
 Configuring a BSAP Master • 34
 Configuring RSLinx • 17
 Connect your PC to the Module • 20
 Connect your PC to the Processor • 14
 Controlling Law and Severability • 79
 ControlLogix Processor Not in Run • 59

D

Data Bits • 32
 Data Flow Between the MVI56-BSAPS Module and the
 ControlLogix Processor • 64
 Database View Menu • 48
 DB9 to RJ45 Adaptor (Cable 14) • 70
 Diagnostics and Troubleshooting • 7, 43
 Disabling the RSLinx Driver for the Com Port on the
 PC • 65
 Disclaimer of all Other Warranties • 78
 Disclaimer Regarding High Risk Activities • 77
 Displaying the Current Page of Registers Again • 49

Download the Project to the Module • 33
 Download the Sample Program to the Processor • 19

E

Enable • 32
 Error/Status Block Pointer • 30
 Exiting the Program • 48
 Extension Name • 31

F

Features and Benefits • 55
 Formatted Pass-Through Control Block • 63
 Functional Overview • 7, 57
 Functional Specifications • 56

G

General Concepts • 58
 General Specifications • 55
 Guide to the MVI56-BSAPS User Manual • 7

H

Hardware Specifications • 56
 HH AL • 31
 Hi AL • 31
 Hi DB • 31
 How to Contact Us
 Technical Support • 73, 74

I

Immediate Response Mode • 30
 Install ProSoft Configuration Builder Software • 11
 Install the Module in the Rack • 13
 Installing and Configuring the Module • 21
 Intellectual Property Indemnity • 77
 Introduction • 57

K

Keystrokes • 46

L

Ladder Logic • 37
 LED Status Indicators • 7, 52
 Limitation of Remedies ** • 78
 LIMITED WARRANTY • 75, 76
 LL AL • 31
 Lo AL • 31
 Lo DB • 31

M

Main Logic Loop • 59
 Main Menu • 46
 Module Configuration • 21
 Module Data Object (BSAPModuleDef) • 37
 Module Entries • 28
 Module Name • 29
 Module Power Up • 58
 Module Type • 29
 Moving Back Through 5 Pages of Registers • 49

MVI56-BSAPS Status Data Area • 70

N

Navigation • 45
 No Other Warranties • 79
 Normal Data Transfer • 61
 Number of Signal Value • 30

O

Open the Sample Ladder Logic • 15
 Opening the Backplane Menu • 47
 Opening the Command List Menu • 52
 Opening the Database Menu • 47
 Opening the Protocol_Serial_BSAP Menu • 47
 Opening the Serial Port Menu • 52

P

Package Contents • 10
 Parity • 32
 Pass-Through Control Block Examples • 63
 Pass-Through Control Blocks • 62
 Pass-Through Time Synchronization • 62
 Pinouts • 2, 12, 65, 70
 Please Read This Notice • 2
 Printing a Configuration File • 28
 Procedures for Return of Units Out of Warranty: • 75
 Procedures for Return of Units Under Warranty: • 75
 Product Specifications • 7, 55
 ProSoft Configuration Builder • 25
 ProSoft® Product Documentation • 3
 Protocol Overview • 57
 Protocol Serial BSAP Menu • 51
 Purchasing Warranty Extension: • 75

R

Read Block • 61
 Read Register Count • 29
 Read Register Start • 29
 Reading Status Data from the Module • 43
 Receiving the Configuration File • 47
 Redisplaying the Menu • 50, 51
 Reference • 7, 55
 Required Hardware • 43
 Required pin assignments • 34
 Resetting diagnostic data • 47
 Return Material Authorization (RMA) Policies and
 Conditions • 74
 Returning to the Main Menu • 50, 51
 RS-232 • 67
 Modem Connection • 67
 Null Modem Connection (Hardware Handshaking)
 • 68
 Null Modem Connection (No Hardware
 Handshaking) • 68
 RS-232 Configuration/Debug Port • 65
 RS-422 • 69
 RS-485 • 69
 RS-485 and RS-422 Tip • 69
 RTS Off • 33
 RTS On • 33

S

Select the Slot Number for the Module • 16
 Sending the Configuration File • 47
 Set Module Parameters • 21, 27
 Set Up the Project • 25
 Setting Jumpers • 12
 SFirmware Enable • 30
 Signal Addr • 31
 Signal Descriptor • 32
 Signal List Number • 30
 Signal Type • 31
 Skipping 500 Registers of Data • 49
 Slave Driver • 64
 Slave ID • 33
 Start Here • 7, 9
 Status Data • 39
 Stop Bits • 32
 Support, Service & Warranty • 7, 73
 System Requirements • 9

T

The Configuration/Debug Menu • 44
 Time Limit for Bringing Suit • 79
 To Determine the Firmware Version of your Processor
 • 15
 Troubleshooting • 54

U

Use CTS Line • 33
 User Data Objects • 38
 Using the Diagnostic Window in ProSoft Configuration
 Builder • 44

V

Version No • 31
 Viewing Backplane Diagnostic Information • 51
 Viewing Configuration Information • 50, 52
 Viewing Data in ASCII (Text) Format • 50
 Viewing Data in Decimal Format • 49
 Viewing Data in Floating Point Format • 49
 Viewing Data in Hexadecimal Format • 49
 Viewing Error and Status Data • 52
 Viewing Register Pages • 49
 Viewing the Next 100 Registers of Data • 49
 Viewing the Previous 100 Registers of Data • 49
 Viewing Version Information • 46, 50, 51

W

Warm Boot • 62
 Warm Booting the Module • 47
 Warnings • 2
 What Is Covered By This Warranty • 76, 78
 What Is Not Covered By This Warranty • 76
 Write Block • 62
 Write Register Start • 29

Y

Your Feedback Please • 3

